

THE ANNUAL REPORT

TO KNOW *Christ*

AND MAKE *Him* KNOWN

IN ANDERSON & SURROUNDING COMMUNITIES

**ANDERSON FIRST CHURCH OF THE
NAZARENE**

MARCH 1, 2025-FEBRUARY 28, 2026

FAMILY LIFE MINISTRY

NURSERY
MINISTRY

\$22,931

CHILDREN
MINISTRY

\$98,493

YOUTH
MINISTRY

\$101,737

NURSERY MINISTRY: STAFF SALARIES, SUPPLIES, SPECIAL EVENTS, CURRICULUM

CHILDRENS MINISTRY: STAFF SALARIES, VBS, CHILDREN'S CLASSES, CHILDREN'S WORSHIP MATERIALS, CURRICULUM, BIBLES, MINISTRY SAFE, QUIZZING, TRAINING, PRE-K WORSHIP, SUPPLIES,

YOUTH: STAFF SALARIES, CHURCH CAMP, WEEKLY EVENTS. CURRICULUM PARTIES, SUPPLIES

ADULT MINISTRY

SUNDAY
SCHOOL

\$8,800

TOTAL
ADULT
MINISTRY

\$32,940

PASTORAL
CARE

\$99,924

ADULT MINISTRY: STAFF SALARIES, MINISTRY TO MEN,
WOMEN, YOUNG ADULTS, AND SENIORS

LIFE RECOVERY, GRIEF SHARE, PRAYER MINISTRY, BABY
SHOWERS, WEDDING SHOWERS, WEDNESDAY MEALS,
SPECIAL ADULT SERVICES, SUNDAY SCHOOL AND SMALL
GROUP CURRICULUM, RIGHT NOW MEDIA

PASTORAL CARE: STAFF SALARIES, CARD MINISTRY, FOOD
MINISTRY, VISITATION AND GUEST MINISTRY, DARE TO CARE
HOSPITAL MINISTRY
COMMUNITY AID AS NEEDED

BUILDINGS & PROPERTIES

CREATIVE
CAMPUS/
HISPANIC
MINISTRY

\$107,255

MAIN CAMPUS
BUILDINGS &
PROPERTIES

\$308,637

INSURANCE
EXPENSES

\$40,439

AFC MAIN CAMPUS BUILDING: STAFF SALARIES, LEAD PASTOR, CITY OF ANDERSON UTILITIES, CENTER POINTE ENERGY, INSURANCE, BEST WAY, MISC UTILITIES, VEHICLE MAINTENANCE, VEHICLE FUEL, BUILDING & PROPERTY IMPROVEMENT, LAWN CARE & SNOW REMOVAL

Sanctuary Remodel funds raised \$183,153

HISPANIC MINISTRY- STAFF SALARY, WEEKLY EVENTS, BUILDING MAINTENANCE, WORSHIP SERVICES

WORLD MISSIONS & COMMUNITY CENTER MINISTRY

WORLD
MISSIONS

\$122,572

COMMUNITY
CENTER

\$84,817

**WORLD MISSION: DISTRICT BUDGETS, WORLD
EVANGELISM BUDGET**

**FAITH PROMISE, NMI BOOKS AND MATERIALS,
ALABASTER EXPENSES, CRISIS CARE KITS POSTAGE
SCHOOL PAL PAKS POSTAGE**

COMMUNITY CENTER MINISTRY:

**STAFF SALARIES, PLAYZONE DISINFECTION
NON-PROFIT ORGANIZATIONS EVENTS
LUNA COFFEE BAR, BOOKSTORE**

WORSHIP MINISTRY & OFFICE EXPENSES

WORSHIP
MINISTRY

\$88,875

OFFICE
EXPENSES

\$108,000

WORSHIP: TRADITIONAL SERVICE, WORSHIP SERVICE
CONTEMPORARY SERVICE SPECIAL SERVICES, WORSHIP
STAFF

OFFICE EXPENSES: STAFF SALARIES, PAPER, COPIER
LEASE, INK, SUPPLIES, COMMUNION SUPPLIES, POSTAGE,
INTERNETEMAIL SUBSCRIPTION, PHONES, TITHE
ENVELOPES, COMPUTERS, INTERNET PROVIDER, BAPTISM
SUPPLIES, CHURCH MEMBERSHIP SUPPLIES

MORTGAGE DEBT & BIG NEEDS

MORTGAGE
INTEREST
PAID

\$63,496

BOILER
REPLACEMENT
COST

\$75,000-
\$105,000

WESLEYAN INVESTMENT FOUNDATION LOAN AMOUNT:

LOAN AMOUNT: \$945,135.72

BALANCE at the end of February: \$835,149

BUDGET NEEDED & WEEKLY NEED

WEEKLY
NEED

\$26,824

BUDGET
NEED FOR
2026/2027

\$1,394,848

THE
COMMUNITY
@ AFC
CENTER

**LUNA COFFEE
BAR
MISSION MEALS**

412

**INDIVIDUALS
HELPED BY
SHOWER
FACILITY**

620

**INDIVIDUALS
HELPED BY
CLOTHES CLOSET
MINISTRY**

2243

PARTY RENTALS

114

FIELD TRIPS

17

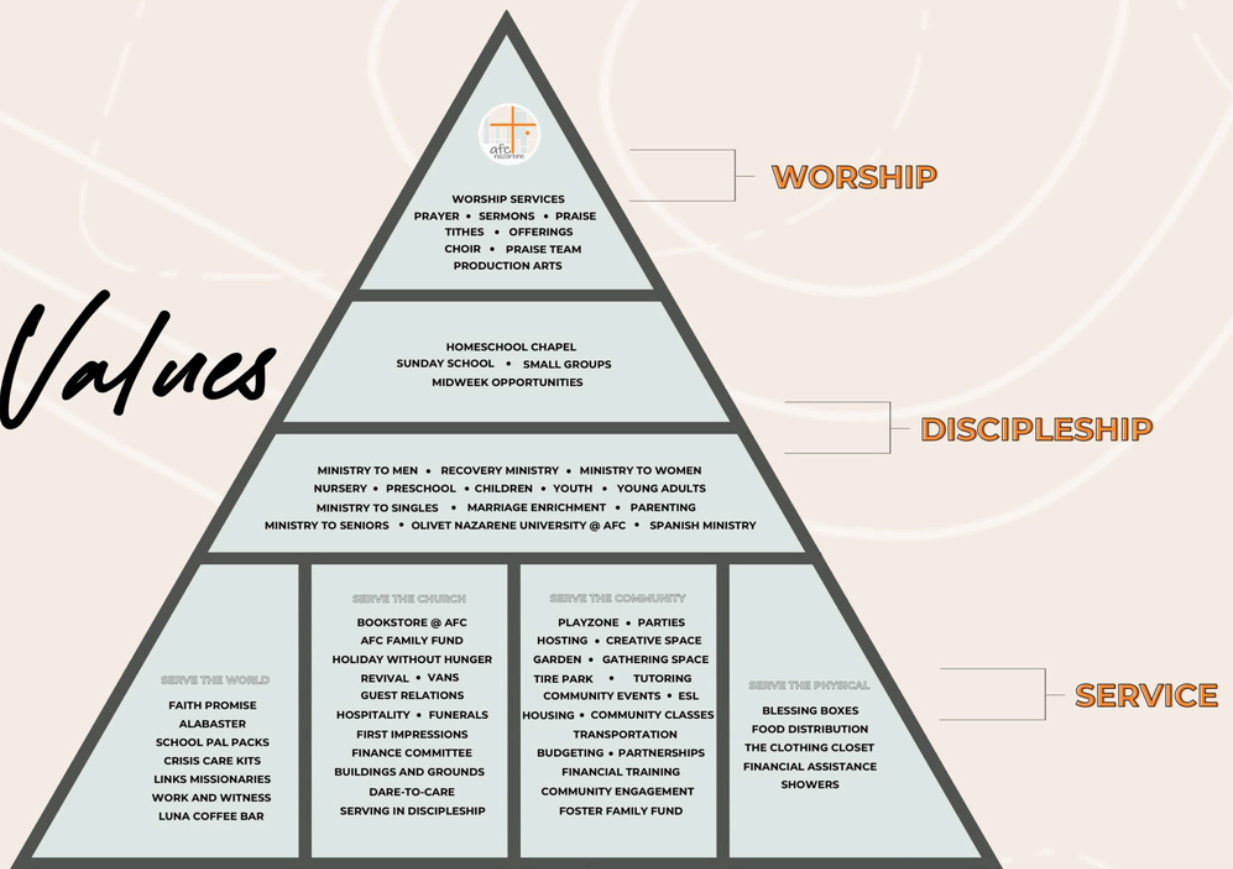
**NON-PROFIT,
CORPORATE AND
COMMUNITY
EVENTS**

96

**ADULT CHECKED
IN TO PLAYZONE**

5650

AFC'S Core Values



TO KNOW **CHRIST** AND MAKE **HIM** KNOWN.

REV. SHELLY STOTTLEMYER
Associate Pastor

KERI KARDATZKE
Community Center Director

Tori Ainsworth
Children Assistant

REV. CORTNEY COOMBS
Children's Pastor

Jami Dailey
Office admin

Mike Derexson
Facilities Manager

REV. ELIAS CABELLO
Spanish Ministries Pastor

Heather Doddrill
Nursery Director

Nicole Watkins
Sabrina Friend

REV. JOEY CLAUS
Youth Pastor

Eliizabeth Shepherd
Youth Assistant

Tim Cox
Facilities

NOTES