

MAY 17, 2026 | PASTOR RYAN MUSTERED

Honor One Another
Instruct One Another
Romans 15 & 16 NT Survey

The Point: Instruction brings blessing

Instruction Purpose: Encouragement and Hope

Instruction Root: Instruct, Warn, Teach, Admonish

Instruction Types: Peer to Peer, Among & Over

Instruction Posture:

Humility, Encouragement and Patience

Family, not Enemy, Urgency and Compassion

Love, not Shame, Warning and Wisdom

Worship and Gratitude

Instruction Examples: Priscilla and Aquila, Jesus

Action Point: Instruct like Jesus!

Notes:

Trinity Church



Welcome

TRINITY CHURCH - ONE CHURCH MULTIPLE LOCATIONS

THE MISSION

LOVE GOD
LOVE OTHERS
SERVE THE WORLD

THE VISION

Transforming Lives & Communities

LEAD PASTOR | Ryan Mustered

ASHKUM CAMPUS PASTOR | Tim Tammen

GOODLAND CAMPUS PASTOR | James McGovern

WATSEKA CAMPUS PASTOR | Bart Koester

COUNSELING PASTOR | Austin Pendry

ONLINE HOST | Jonica Suver

TRINITY FAMILIA HOSTS | Miriam & Brandon Wesley

CENTRAL OFFICE

1658 E Walnut St. Watseka, IL 60970 | 815.432.4070

www.mytrinity.tv

SUNDAYS AT TRINITY

CHILDREN

Nursery (ages 0-3)

Ashkum Campus | 9AM
Watseka Campus | 9AM
Goodland Campus | 10AM

J.A.M. (PreK -5th Grade)

Ashkum Campus | 9AM
Watseka Campus | 9AM
Goodland Campus | 10AM

YOUTH

Middle School Refuge

Watseka Campus | 9AM

High School Refuge

Ashkum Campus | 6PM (Oct-Mar)
Watseka Campus | 6PM (Sept - May)

WORSHIP

Ashkum Campus | 9AM
Watseka Campus | 9AM & 10:45AM
Online LIVE Campus | 9AM
Goodland Campus | 10AM
Trinity Familia | 10:45AM

TODAY

WATSEKA CAMPUS

Last HS Refuge



PSALM 27:1

UPCOMING

WEEKLY

TUESDAYS

C.O.R.E. | 6PM | Ashkum Campus
Celebrate Recovery | 6:30PM | Watseka Campus

WEDNESDAYS

AYM | 6PM | Ashkum Campus

THURSDAYS

Men's Bible Study | 6AM | Watseka Campus

SATURDAYS

Men's Bible Study | 7AM | Watseka Campus
Men's Bible Study | 8AM | Ashkum Campus

MONTHLY

MONDAYS | 6:30PM

Alzheimer's Caregiver Support
Ashkum Campus
2nd Monday of the month

THURSDAYS | 7PM

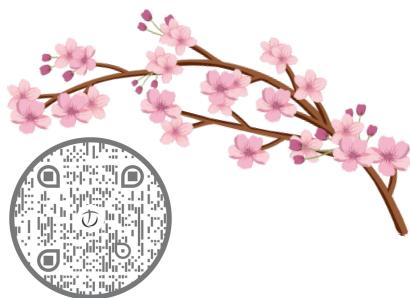
HealingStrong
Ashkum Campus
2nd Thursday of the month

SATURDAYS | 7:30AM

Men's All Campuses Breakfast
Watseka Campus
1st Saturday of the month

NEW HERE? START HERE.

Everything you need to know about Trinity Church—what to expect, where to go, and how to get connected. Let us help you get to know Trinity and find your place.



WHAT IS HAPPENING AT TRINITY

ASHKUM CAMPUS | JUNE 22-26 | 9AM - 11:30AM



Kids ages 4–6th grade are invited on an exciting adventure through Ireland as they explore Psalm 23 and discover how to move from worry to peace and from fear to faith through a relationship with the Good Shepherd.
Get your passport ready for Ireland and join the adventure!

WATSEKA CAMPUS | JUNE 22-25 | 1PM -3:30PM

Kids ages 3 - 6th grade are invited to enjoy fun, hands-on cooking activities and engaging Old Testament stories. As young "chefs," they'll discover how God uniquely created them, how we're stronger together, and how to share His story with others in an interactive and memorable way.



GOODLAND CAMPUS | JUNE 29-JULY 1 | 1PM - 4PM

Kids ages 3 - 6th grade are invited to enjoy fun, hands-on cooking activities and engaging Old Testament stories. As young "chefs," they'll discover how God uniquely created them, how we're stronger together, and how to share His story with others in an interactive and memorable way. Pick up a registration form at the Welcome Center. If you are intertested in helping out at VBS please contact Pastor James - james@mytrinity.tv

ASHKUM CAMPUS WOMEN'S MINISTRY | JUNE 13

What Season Are You Walking Through?

Women of all ages are invited to a special luncheon centered around the theme "He Is With Us in Every Season." Guest speaker Pamela Cross will share encouragement and hope as we reflect on God's faithfulness through every stage of life. Lunch will be served, and Almond Branch Co. will have inspirational items available for purchase. Register by June 7. Sign up at the Welcome Center or by scanning the QR code.



MOM'S SUMMER STUDY | WATSEKA CAMPUS | JULY 22

Life brings joy, grief, love, fear, hope, and suffering—but God's Word speaks into them all. "Emotions and the Heart" is a 4-week women's Bible study designed to help moms understand emotions through a biblical lens and honor God in the way we process and express them. July 22–Aug. 12 • 6:30 PM • Watseka Campus Sign up at the Welcome Center or by scanning the QR code by June 21. Open to all moms!

