

# LIGHT OF THE WORLD” . . . A STUDY OF THE GOSPEL OF JOHN **Jesus Before Pilate**

John 18:28-38 Pew Bible Page 591

(Large print edition available at the tables on both sides of the Worship Center)

Following trials with Annas and Caiaphas at night, the Sanhedrin assembles early morning and decrees Jesus guilty of \_\_\_\_\_ (John 19:7) and worthy of death.

To fulfill His own prophecy in Matthew 20:18-19 and John 18:32, Jesus must die the death of one under God’s \_\_\_\_\_. Deuteronomy 21:22-23; Galatians 3:13

### TYPICAL ROMAN TRIAL (4-STEP PROCESS):

**STEP 1 – \_\_\_\_\_** Verses 28-32

The Sanhedrin handed Jesus over at the gate, not wanting to be defiled by entering the home of a Gentile. The unbelieving religious leaders had a higher regard for their religious practices than for love, \_\_\_\_\_, and justice.

Pilate tells them to pass judgment and execute the sentence themselves since the crime of blasphemy was not sufficient grounds for the Romans to execute a man.

**STEP 2 – \_\_\_\_\_** Verses 33-35

The Sanhedrin changes their charge to \_\_\_\_\_ against Rome (John 19:12), which Pilate could not politically afford to ignore.

Perhaps Jesus answered Pilate’s question judging that Pilate was not yet hardened beyond the \_\_\_\_\_ of salvation, but Pilate’s response was prideful rejection.

**STEP 3 – \_\_\_\_\_** Verses 36-38a

Jesus assures Pilate that His Kingdom is not of this world:

1. Jesus affirms that Pilate is right (Verse 37). He is \_\_\_\_\_ of both the Jews and a greater Kingdom.
2. Jesus declares that His Kingdom is not of this world.
3. Jesus reveals that His kingship is in the hearts and lives of all those who listen to \_\_\_\_\_.

For Pilate to condemn Jesus would be to condemn truth. Pilate cannot recognize the things of God and questions a central issue for salvation, “What is truth?”

**STEP 4 – \_\_\_\_\_** Verse 38b

Pilate again goes to the Sanhedrin and announces Jesus’ \_\_\_\_\_.



**EXPERIENCE FAITH**

*Encounter God*

MATTHEW 18:20

*Experience God Together*

MATTHEW 22:37-40

*Empty Self*

PHILIPPIANS 2:5-8

**JUNE 7, 2026**

**CARDBOARD TESTIMONIES**

♥

**Celebrate cardboard testimonies in both services today.**

**Our Sunday worship services schedule change begins today:**

**Blended service is 8:15-9:30 a.m.**

**Contemporary service is 11:00 a.m.-12:15 p.m.**

**Sunday School time will remain at 9:45 a.m.**

*Come Expectant. Leave Encouraged.*

# OPPORTUNITIES TO EXPERIENCE FAITH

Welcome to each of our guests! Thank you so much for coming. We hope you are blessed today and will come again very soon. It would help us greatly if you will complete the tear-off section of this bulletin and turn it in after the service at the E<sup>3</sup> CENTRAL desk in the main foyer or in the offering stands at the exit doors. We have a gift at E<sup>3</sup> CENTRAL for each first-time guest and will follow up with you by telephone.

*Pray For Israel and Ukraine*

Today we will be blessed by “cardboard testimonies” in both services. You will also be inspired by the music that will undergird the testimonies of some seventeen of our members.

The Lord’s Supper will be observed next Sunday morning.

## *Parenting Class*

Our intentional parenting class begins this evening at 6:00 in Fellowship Hall for practical teaching and encouragement led by Caleb Parrish and Mandy Ratliff. Parents, you will also have the opportunity to discuss each topic in small groups with other parents of children in similar life stages. A youth activity and childcare will be provided.

**It's FREE!**

# FAITHKIDS VBS

**June 8-12**  
**9AM - 12PM daily**

**Completed Kindergarten - 5th Grade**  
**Register online at [faithwf.com](http://faithwf.com)**

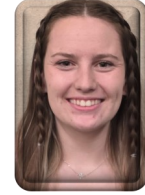
## *Foundations Sunday*

The next Foundations class will meet next Sunday during Sunday School at 9:45 and then again that evening at 5:30. This class includes an opportunity to meet staff and leadership and is required for all new members but is also open to those just seeking more information about Faith Baptist. A delicious breakfast and dinner are served during the two sessions and reservations can be made by checking the appropriate box on the tear-off form of this bulletin and placing it in the offering stands or taking it to the E<sup>3</sup> CENTRAL desk. Deadline to register is today.

## *Welcome New Members*



Lee & Annie Gunter



Shay Hayden

## *Return the Blessing*

“Return the Blessing” Offering is Sunday, June 21 as we add to the collection of canned goods our VBS children bring so that Interfaith Outreach Services has an adequate supply to assist families in need this summer.

## *Students 7<sup>th</sup>–12<sup>th</sup> Grades*

**FALLS CREEK CAMP — JUNE 22-27 — Cost \$250 per person**

**MISSION TRIP — BURNET COUNTY, TX – JULY 13-18 — Cost \$200 per person**

Registration for both camp and mission trip are online at [faithwf.com/students](http://faithwf.com/students).

Contact Jo Ann Larimore in the Church Office 692-4220 or [joannl@faithwf.com](mailto:joannl@faithwf.com) for additional information.

## *Abide Women's Ministry*

- BIBLE STUDY** – Thursdays at 6:15 p.m. in Reception Hall
  - COOKING CLUB** – Today at 3:00 p.m. in the FLiC Kitchen
  - BOOK CLUB** – Sunday, June 24 at 4:00 p.m. at McAlister’s Deli, 3900 Call Field Rd.
  - DINNER GROUPS** – Contact Delynn Mabry at 940-733- 6830
- More information: Lauren Welch (940-631-0579), at [faithwf.com/women](http://faithwf.com/women) and on Facebook at “Faith Baptist Church – Abide Women’s Ministry”

To assist in contributing to our church as God leads you.



## *Experience God Together with Us*

- 8:00 a.m. Streaming of last week’s sermon available online
- 8:15 a.m. Blended Worship in the Worship Center
- 9:45 a.m. Small Group Sunday School classes for all ages
- 11:00 a.m. Contemporary Worship in the Worship Center

**PARENT ROOM** to assist parents with restless children, the Parent Room is to your right as you sit in the Worship Center. Sound, windows into the Worship Center, and subdued lighting are available.

**E<sup>3</sup> CENTRAL** is located in the Rhea Road foyer outside the Worship Center. It is the place to go for information about preschool, children’s, youth and adult activities and all things in church life.