



**CHRIST'S
CHURCH**

FIND YOUR PASSION

USE YOUR GIFTS

MAKE AN IMPACT

OUR MISSION

"We exist to glorify God by leading people to become fully devoted followers of Jesus Christ"

We desire to see how God has prepared and equipped you for service so that you can join us in our mission to lead people to be fully devoted followers of Jesus.

Our conviction, rooted in the Bible, is that every believer has been given gifts and is called to exercise those gifts to serve others. Therefore, we reject the "consumer Christianity," which seeks only to be served and to serve no one. Instead, we strive to love and serve one another out of an overflow of devotion to Christ.

We would love to help you find your passion and use your gifts! Use this handbook to see what serving opportunities are available here at Christ's Church and then jump all in!

We can't wait to serve alongside you!

OUR # 1 NEED

We get asked all the time where our biggest need is for people to serve at Christ's Church. However, the answer isn't what you might expect. Yes, we always need more people to serve on our kid's ministry teams or on the welcome team. But those aren't our #1 need.

What we need the most is for you to be fully committed to making disciples through whatever team you are on.

Let's say that you don't really like kids but you have a passion for making sure people know that they are loved by God. Did you know that you don't have to like kids to serve on the kid's ministry team (although it helps tremendously)?

That's because there are ways to use your talents and abilities on any team. The kid's ministry team is full of adults who need to be reminded that God loves them. Also, every kid comes to Christ's Church with at least one adult and those adults also need to have someone checking in on them. That is why every team needs people who are fully committed to our mission because there is room for everyone in the body of Christ. If Jesus says you are part of His body (Trust us, 1 Corinthians 12:12-14 is pretty clear), then that is good enough for us.

OPPORTUNITIES



WELCOME TEAM



KIDS CHECK-IN



SAFETY TEAM



GROWTH TRACK



EARLY CHILDHOOD
(Birth-5yrs.)



ELEMENTARY
(K-5th)



STUDENTS
(6TH-12TH)



COMMUNION



MEDIA AND LIGHTS



BAND AND SOUND



WELCOME TEAM

WAYS YOU'LL SERVE

OUR WHY

We want people to know they are welcome at Christ's Church by how we show hospitality. We want every person to be known by name and feel accepted in our family.

RESPONSIBILITIES

If you can smile or bring a smile to someone's face, you'll be a perfect match for the team. You need to be in place 30 minutes before service and stay 10 minutes after it starts. Team members serve on a weekly or monthly basis.

ROLES

Team members are strategically placed around the building to be able to greet people as they walk through the doors, answer questions at the welcome center, help people find a seat in the auditorium, or help people get coffee.

HOW TO JOIN

1. Stop by the Welcome Center and talk to a Growth Track member.
2. Text "Serve" to 217-387-3823



KIDS CHECK-IN

WAYS YOU'LL SERVE

OUR WHY

We want parents to know that we take great pride in creating a safe and secure environment for their kids to learn about Jesus.

RESPONSIBILITIES

You need to be in place 20 minutes before service and stay at the check-in station during the entire service. Team members serve on a weekly or monthly basis.

ROLES

If you like interacting with parents and their kids, you'll be a perfect match for the team. Team members ensure a smooth check-in process for parents and assist with families needing to check in their kids for the first time.

HOW TO JOIN

1. Stop by the Welcome Center and talk to a Growth Track member.
2. Text "Serve" to 217-387-3823



SAFETY TEAM

WAYS YOU'LL SERVE

OUR WHY

We take great pride in ensuring we have a safe environment for people to worship Jesus.

RESPONSIBILITIES

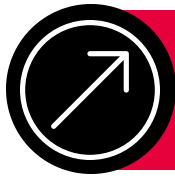
You need to be in place 30 minutes before service and stay throughout the entire service. Team members serve on a weekly or monthly basis.

ROLES

Team members are strategically placed around the building to be able to respond to any situation whether first aid related or safety related.

HOW TO JOIN

1. Stop by the Welcome Center and talk to a Growth Track member.
2. Text "Serve" to 217-387-3823



GROWTH TRACK

WAYS YOU'LL SERVE

OUR WHY

We want to see people become fully devoted followers of Jesus Christ. Growth Track helps connect people to their next step of faith.

RESPONSIBILITIES

If you like to talk to people about their faith in Jesus, you'll be a perfect match for the team. You need to be available to speak with people between services. Team members serve on a weekly or monthly basis.

ROLES

Team members stand near the Welcome Center to be available when people want to discuss their next step of faith. Team members also have opportunities throughout the week to connect with people who want to take the next step.

HOW TO JOIN

1. Stop by the Welcome Center and talk to a Growth Track member.
2. Text "Serve" to 217-387-3823



EARLY CHILDHOOD

(BIRTH - 5YRS.)

WAYS YOU'LL SERVE

OUR WHY

We want to create a fun environment for those just starting out in life. We take great pride in creating a safe and age-appropriate area for kids to discover and trust God's love for them.

RESPONSIBILITIES

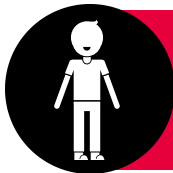
If you like experiencing the joys that little kids bring to life, you'll be a perfect match for the team. You need to be in place 20 minutes before service and stay throughout service. Team members serve on a weekly or monthly basis.

ROLES

Team members help create a fun and safe environment through age-appropriate lessons, activities, and playtime. Background checks are required for all volunteers before serving.

HOW TO JOIN

1. Stop by the Welcome Center and talk to a Growth Track member.
2. Text "Serve" to 217-387-3823



ELEMENTARY (K-5TH)

WAYS YOU'LL SERVE

OUR WHY

We want to create a fun environment for students to believe in God's love and plan for them. We take great pride in creating a positive and safe environment for kids to explore following Jesus.

RESPONSIBILITIES

If you like showing others that following Jesus is fun and worth it, you'll be a perfect match for the team. You need to be in place 20 minutes before service and stay throughout service. Team members serve on a weekly or monthly basis.

ROLES

Team members help create a fun and safe environment through age-appropriate lessons, activities, and playtime. Background checks are required for all volunteers before serving.

HOW TO JOIN

1. Stop by the Welcome Center and talk to a Growth Track member.
2. Text "Serve" to 217-387-3823



STUDENTS (6TH-12TH)

WAYS YOU'LL SERVE

OUR WHY

We want to invest in our students at a time in their lives when gospel-centered relationships matter the most. We want to empower our students to mature in their faith and make it their own.

RESPONSIBILITIES

If you want to see a group of students passionately following Jesus and be part of that, you'll be a perfect match for the team. Team members serve every week because dependability and consistency are vital for students.

ROLES

We believe that students need to be part of a life group that can empower them to mature in their faith. Team members help disciple and lead students through life groups. Background checks are required for all volunteers before serving.

HOW TO JOIN

1. Stop by the Welcome Center and talk to a Growth Track member.
2. Text "Serve" to 217-387-3823



COMMUNION

WAYS YOU'LL SERVE

OUR WHY

We want to create an environment that helps people worship God wholeheartedly. Communion is an essential part of worship and helps form our identity as the body of Christ.

RESPONSIBILITIES

If you are punctual and like serving behind the scenes, you'll be a perfect match for the team. Team members serve on a weekly or monthly basis either.

ROLES

You'll need to have the communion elements ready and in place before service, and you are also in charge of cleaning up after service.

HOW TO JOIN

1. Stop by the Welcome Center and talk to a Growth Track member.
2. Text "Serve" to 217-387-3823



MEDIA AND LIGHTS

WAYS YOU'LL SERVE

OUR WHY

We want to create an environment that helps people worship God wholeheartedly. We believe that a visually appealing service helps people worship God.

RESPONSIBILITIES

If you like helping people worship God, you'll be a perfect match for the team. Team members serve every service and also attend practice on Thursday nights. Team members serve on a weekly or monthly basis.

ROLES

Team members are in charge of the slides on the screens, lighting in the room, and recording parts of the service.

HOW TO JOIN

1. Stop by the Welcome Center and talk to a Growth Track member.
2. Text "Serve" to 217-387-3823



BAND AND SOUND

WAYS YOU'LL SERVE

OUR WHY

We want to create an environment that helps people worship God wholeheartedly. We believe that having a talented band helps people worship more effectively.

RESPONSIBILITIES

If you like helping people worship God, you'll be a perfect match for the team. Team members serve each service and also attend practice on Thursday nights. Team members serve on a weekly or monthly basis.

ROLES

Team members must be talented musicians or singers who can effectively lead others in worship through music. Team members need to apply to join the team.

HOW TO JOIN

1. Stop by the Welcome Center and talk to a Growth Track member.
2. Text "Serve" to 217-387-3823

NOT SURE WHICH TEAM TO JOIN?

LET THE GROWTH TRACK TEAM HELP

- Why do you want to serve at Christ's Church?
- What experiences have you had in your life and faith that could be used to help other people?
- What area(s) are you passionate about? Is there a people group that you desire to know Jesus more?
- Do you have friends at Christ's Church already serving on a team?

FIND YOUR PASSION

USE YOUR GIFTS

MAKE AN IMPACT