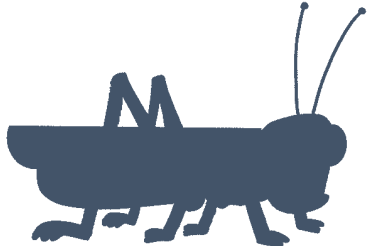
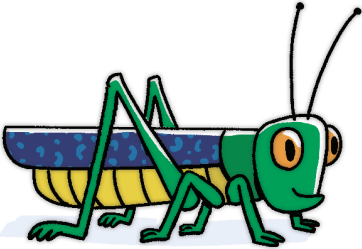


Match the Picture to Its Shadow

INSTRUCTIONS: John's clothes were made of camel hair, and he ate locusts and wild honey. Draw a line to match each picture to its shadow.



NAME:



the **GOSPEL** PROJECT.



John's Ministry Began

Matthew 3; Mark 1; Luke 3; John 1

STORY POINT:

John got people ready for Jesus.

CHRIST CONNECTION:

John's message for the people is a message for us too. We can turn from our sins and follow Jesus.

KEY PASSAGE PHRASE:

The Word became flesh and lived among us.

John 1:14

BIG PICTURE QUESTION:

Is Jesus God or a human? Jesus is fully God and fully human.

Scan the QR code
for resources to
use at home!



Younger Preschool Activity Pages
Unit 20 • Session 1