

FALLS CREEK YOUTH CAMP 2026 PARENT INFO

WHAT IS FALLS CREEK YOUTH CAMP?

Falls Creek Youth Camp is the largest Christian camp of its kind in the world. Nestled in the Arbuckle Mountains in southern Oklahoma, Falls Creek Youth Camp has been in operation since 1917. It is a distinctively Christian camp, upholding high moral standards and challenging students to follow Christ every day.

Falls Creek Youth Camp is unique in that it is a place where over 100 churches come each week to hold their own camp week. Each church secures a cabin, provides its own adult leaders and meals, enforces the camp dress code and code of conduct, and teaches its in-cabin bible study and devotions.

The 2026 focal passage is Matthew 28: 16-20 "Then the eleven disciples went to Galilee, to the mountain where Jesus had told them to go. When they saw him, they worshiped him; but some doubted. Then Jesus came to them and said, "All authority in heaven and on earth has been given to me. Therefore, go and make disciples of all nations, baptizing them in the name of the Father and of the Son and of the Holy Spirit, and teaching them to obey everything I have commanded you. And surely, I am with you always, to the very end of the age."

If you would like to look in or listen to some of the camp services, you may find a link to our livestream at oklahomabaptists.org/youthcamp. Our Evening Worship Services stream during the summer on weeknights from 7:30-8:45pm. You may also follow up on social media. Instagram @okbaptistyouth Facebook: /okbaptistyouth. For more information on Falls Creek Conference Centers and youth camp visit www.fallscreekok.org and www.oklahomabaptists.org/youthcamp.

HOW TO PRAY THIS WEEK

Your student(s) need to know that you and your church are praying for them as they spend the week at camp. We encourage you to pray each day specifically for the group. Please pray for the safety of the camp, camp leadership, adult leaders, and for the specific daily events as they happen.

RECREATION

Volleyball, kickball, horseshoes, zip lines, high and low ropes course challenge elements, skateboarding, hiking, pickleball, soccer, running, kayaks, lake park, water slides, spiritual growth breakouts, missions mobilization, swimming, and more activities are scheduled for the week of camp. In addition to these camp-wide recreation options, each church designs its own recreation plan for its cabin.

A 2026 RELEASE FORM MUST BE COMPLETED FOR EACH STUDENT AND SIGNED BY A PARENT OR GUARDIAN

This information is helpful to the camp physician in ministering to an injured or ill person. Most minor injuries or illnesses are taken care of in the church cabin. However, if medical attention should be required there is a First Aid Station on grounds. Students must be accompanied by an adult leader from their church when visiting first aid. If the illness or accident should be of a serious nature, patients may be sent to a hospital or doctor in a nearby town. The form is either printed for you to complete or submit to your church group leader or completed through an online link specific to your group. This depends on the church's registration type.

DAILY SCHEDULE

MONDAY

- 1:00-4:00pm Registration
(North Tabernacle entrance)
Dinner
- 6:30pm Adult Leader Seating
(South Tabernacle entrance)
- 6:30pm Invitation Training
(Chapel exterior doors open at 6:15pm)
Repeats on Tuesday
- 6:55pm Tabernacle Doors Open
- 7:00pm Pre-Session/Camp Orientation
- 7:30pm Evening Worship Service
- 9:00pm Youth Camp Late Night
- 10:15pm Evening Cabin Devotional
- 11:45pm Inside Cabins

TUESDAY - FRIDAY

- 6:15-7:30am Daybreak (Tuesday only)
Breakfast
- 8:30 or 40am Quiet Time
- 9:00am In-Cabin Bible Study
(All students in cabins until 10:00am)
- 10:40am Staff/Adult Leader Daily Update
(Chapel exterior doors open at 10:20)
- 10:40am Doors Open for Morning Worship Service
(Groups same seats as night before)
- 11:00am Morning Worship Service
- 12:00pm Lunch
- 1:30-5:00pm Activity Time
(Breakouts, Missions, & Recreation, etc.)
Dinner
- 6:30pm Adult Leader Seating
(South Tabernacle entrance)
- 6:55pm Tabernacle Doors Open
- 7:30pm Evening Worship Service
- 9:00pm Youth Camp Late Night
- 10:15pm Evening Cabin Devotional
- 11:45pm Inside Cabins

SPENDING MONEY

Extra spending money is suggested for each student who attends Falls Creek Youth Camp. Pop, ice cream, and other refreshments will be sold between sessions and in the evening throughout the week. T-shirts, devotionals, journals, and many gift items are available at the Falls Creek Gift Shop. All of these are optional expenses.

MAIL & PHONE CALLS

Incoming mail is sorted and delivered to cabins daily. Mail sent to campers should be addressed:

Name of Camper
Church Name/Cabin Name
Falls Creek Conference Center
6714 HWY 77D Davis, OK 73030-8002

FALLS CREEK OFFICE PHONE NUMBER

(580) 369-2101

Please use this number only in the case of an emergency.

VISITING FALLS CREEK

If you drive in for a day at Falls Creek, there will be a \$3 charge per person for the day or individuals may purchase an activities pass for \$10 (Oklahoma Baptists Affiliated) or \$28 (Non-Affiliated). An activities pass will be required to participate in walkup recreation (tournament play is not included). Each driver will also be required to present a valid driver's license to be scanned for entry into camp. These are day charges only. A reminder, all guests visiting Falls Creek Youth Camp must adhere to the dress code.

No student or individual under 18 years of age may enter camp unless 1) the individual is registered with a group for the week of camp in which he or she is seeking entrance, 2) the individual is accompanied by a parent or other adult that is permitted to enter the camp, or 3) the individual is employed by Falls Creek Conference Centers and is entering the camp in the capacity as an employee of Falls Creek Conference Centers.

FALLS CREEK YOUTH CAMP STUDENT PICK-UP

In order to allow for the safest pick-up of students while at Falls Creek Youth Camp, Falls Creek Conference Center will operate according to the following procedures:

PARENT ARRIVAL

- Parent arrives at gate.
- Parent informs gate attendant of student pick up and provides the:
 - Student's name
 - Name of the church with which they are attending
 - Cabin name or number, in which the church is staying
- Parent is then assigned a parking space just outside the gate at a numbered station. There will be five parking spaces along the fence of our Main Gate area, numbered 1-5.

FALLS CREEK STAFF ACTION

- The gate attendant will then call for a Falls Creek Staff member to go to the cabin and alert the group leader/available adult leader of the parent's location outside the gate. After delivering the message, the Falls Creek Staff member will leave the cabin and will not be responsible for transporting the student to the pick-up location.

CHURCH RESPONSIBILITY

- The church is then responsible for verifying the student is present and that the parent requesting the pick-up has custody rights of the student.
- The church is then responsible for transporting the student to the pick-up location outside of the main gate to see the student off.

WHAT SHOULD I SEND?

GENERAL

- Modest clothing (see Dress Code)
- Athletic clothing for sports activities (Dress Code still applies during rec)
- Closed toe shoes for the ropes courses, etc.
- Swimsuit (see Dress Code for appropriate suits)
- Bible
- Notepad
- Pen or pencil
- Spending money for concessions or giftshop
- Umbrella and/or rain jacket
- Flashlight
- Water bottle

CABIN ITEMS

- Pillow
- Bedding
- Towels
- Hygiene items
- Sunscreen
- Bug spray

REC ITEMS

- Skateboard, helmet, and pads (FC provides pads if needed)
- Basketball
- Volleyball (balls for games are provided)
- Fishing tackle (no knives)
- Ping pong paddle



CODE OF CONDUCT FOR FALLS CREEK YOUTH CAMP

GENERAL PURPOSE

Falls Creek Youth Camp weeks are planned for students who have completed 6th through 12th grade. The code of conduct for Falls Creek Youth Camp is intended to assist the many diverse churches and students at camp to have a safe and enjoyable camp experience, while growing in their faith. Falls Creek Youth Camp is a Christian camp designed to help students and adults know and follow God, so the code of conduct prioritizes personal encouragement and issues related to a student's faith development in Jesus. Falls Creek Youth Camp does not condone or encourage any activity on grounds that would humiliate any camper, including initiation, hazing, and/or pranks. Furthermore, Falls Creek Youth Camp will not tolerate any activity that would harm any camper such as violence or abuse of any kind.

MODESTY/PDA

Believing that modesty extends beyond the dress code, Falls Creek Youth Camp asks that students refrain from PDA (Public Displays of Affection). Adult leaders should be diligent to communicate this guideline to their students.

CURFEW

At 10:15pm, all students should be back at their cabin and should not be outside their cabin without an adult leader until after 6:30am. Groups are allowed to meet around the perimeter of their cabin during late night devotional times, but an adult leader should be with the group at all times and extra care should be taken so other groups are not disturbed. Groups/individuals must be inside their cabin by 11:45pm.

VEHICLES

- Recreation vehicles for living or sleeping purposes are permitted only in designated areas and must register in advance with Falls Creek Conference Centers.
- Unnecessary and careless traffic is prohibited on Falls Creek grounds. Only Conference Center operated golf carts, utility carts, or low speed vehicles (LSVs) are permitted.
- Delivery trucks are not permitted during summer camp weeks except to supply Conference Center owned concessions.
- All passengers must be seated in a vehicle according to its designated capacity—no passengers are allowed in pickup beds or in the back of vehicles with hatch doors raised.
- All cycles (uni-, bi-, or tri-) are prohibited on the grounds. Violation of this policy could result in confiscation of equipment. Motorcycles may

only drive to and from the gate to their cabin or meeting place.

CELL PHONES

Falls Creek Youth Camp asks that church leaders make determinations regarding their students' use and possession of cell phones. NOTE: The majority of group leaders limit the time students are allowed to use their cell phones each day in order to cause less distraction from the camp experience.

CAMP REQUIREMENTS

- Students are required to attend both the Morning and Evening Worship Service each day.
- Adult leaders from each church are responsible for enforcing the code of conduct and camp dress code for their entire group (students, adult leaders, and guests) and for handling discipline issues within their group.
- Courtesy Staff will be on duty 24 hours per day. Courtesy Staff, when called upon, will assist the adult leadership of any cabin in dealing with discipline problems that may arise. Although the Courtesy Staff is specifically assigned to the duty of enforcement, all Falls Creek Youth Camp Staff members are authorized to enforce the code of conduct, dress code, and policies of Falls Creek Youth Camp. Please respect all Falls Creek Youth Camp Staff.
- Church groups must sit together at all worship services. If the group is too large to find a single location for everyone, the group should divide into smaller groups with adult leaders in each group.
- All guests are required to show proof of

registration or ID to enter or re-enter the Falls Creek grounds. Drive-in guests should leave grounds by midnight.

CAMP PROHIBITIONS

- Students will not be permitted to leave the grounds unless accompanied by an adult leader.
- No bands or instrumental groups are allowed to perform outside their cabin walls, except for groups that are an official part of the weekly programming for the whole camp.
- Excessive volume from a cabin is not permitted since it can disturb other cabins. Please check with the office, located in the Jordan Welcome Center, if there is an issue.
- No product sales are allowed at Falls Creek Youth Camp unless they have secured a contract through the Falls Creek Conference Centers.
- Use or possession of illegal drugs, alcohol, or tobacco of any type is not permitted on the grounds. This includes e-cigarettes, vaping or other facsimiles. Falls Creek Conference Centers is a smoke free facility.
- The possession of offensive weapons of any sort is prohibited at Falls Creek Youth Camp. Falls Creek Conference Centers reserves the right to perform a random drug and weapon search at any time and confiscate items that distract from the camp goals or that violate the code of conduct.
- A zero-tolerance policy regarding the mention of guns, bombs, or any other explosive (or other weapons) during bag check means that any reference, joke, or statement about these items will result in immediate and serious consequences and the individual will be asked to leave the grounds of Falls Creek. In addition, the rule of no firearms or weapons on grounds includes toys, replicas, or props. The presence of these on grounds or at bag check would result in similar action.
- Starting in 2026, only clear backpacks or clear large bags will be allowed through bag check at the tabernacle and event center. Clear bags are transparent and made of clear plastic, vinyl, or PVC.

Non-clear medically necessary items, diaper bags, small clutch bags not larger than 6"X9", and Bible cases are permitted after proper

inspection by staff at bag check.

Prohibited items include non-clear purses, briefcases, backpacks, cinch bags, luggage of any kind, computer bags/cases, or camera bags/cases.

While we strongly encourage campers and guests (students or adults) to not bring any type of bag, this will speed up entrance and help enhance our safety measures.

Group leaders, please communicate this policy with your group and anyone planning on visiting with your group.

Campers in violation of the clear bag policy will be asked to take prohibited bags back to their cabin. Drive-in guests in violation of the clear bag policy will be asked to take prohibited bags back to their cars.

- Open flame items (other than grills) such as campfires, tiki torches, etc., are not permitted on grounds, unless prepared and supervised by the Falls Creek Conference Centers.
- Pets/animals (other than service dogs), fireworks, rock throwing, water fighting, laser pointers, and shaving cream fights are prohibited on the grounds.
- Masks or any other disguise over the face cannot be worn by anyone outside of their cabin. Face coverings, which cover the nose and mouth for medical-related purposes, are allowed at Falls Creek Youth Camp.
- For the safety of all guests, skates, rollerblades, and skateboards are permitted only in the SwiftSkate Park area and only at designated times.
- No wading or swimming is allowed in the creeks or lake unless there is a Falls Creek Youth Camp lifeguard present. No swimming/wading pools are allowed at cabins.
- No camera drones or remote-controlled flying devices may be operated on grounds without expressed permission from the Director of Falls Creek Conference Centers and the Falls Creek Youth Camp Program Director.
- Campers or groups are not allowed to publicly demonstrate or display or distribute information for awareness or promotion unless pre-approved by the program director and included in official camp programming.



DRESS CODE FOR FALLS CREEK YOUTH CAMP

Churches participating in Falls Creek Youth Camp should fully communicate the dress code to students before they pack and arrive for camp. While we understand the desire for fashionable attire, we require you to wear modest clothing. Modesty is a biblical principle and helps keep people focused on the important things at camp (1 Timothy 2:9-10; 4:12). All apparel judgments will be left to the discretion of the Falls Creek Youth Camp Staff (FCS). If FCS determines a camper or campers should change their clothing to fall in line with camp requirements, then said camper or campers are required to do so.

GENERAL GUIDELINES

- Shoes must be worn at all times outside of your cabin.
- Apparel may not display or promote tobacco, alcohol, controlled substances, or inappropriate language or pictures.
- Under garments must always be covered by outer garments (i.e. No boxer shorts or bra straps showing).
- Midriffs should always be covered.
- No spaghetti strap shirts or dresses.
- No tank tops.
- No short shorts. Shorts must be of modest length. Note: modest length can be generally defined as extending to just beyond the fingertips, which in general is no shorter than 5 to 7 inch inseam.
- No tight fitting and revealing clothing. This includes leggings or similar attire, which cannot be worn as pants. Girls may wear dresses/skirts, but they must reach the top of the knee.

SWIMMING

Girls should wear modest one-piece swimsuits. Males should not wear tight fitting swimming suits. While going to and from the swimming areas, all campers must wear a t-shirt, and females must wear a long covering over their swimming suits. Campers may not be barefoot on the way to and from venues.



FALLSCREEKYOUTH CAMP DRESS CODE

All apparel judgements will be left to the **discretion of the Falls Creek Staff (FCS)**. If FCS determines a camper or campers should change their clothing to fall in line with camp requirements, then said camper or campers are required to do so.



ACCEPTABLE



UNACCEPTABLE



ALWAYS ACCEPTABLE SHIRTS

Shorts must be modest. Modest can be generally defined as extending to just beyond the fingertip or a 5" to 7" inseam.

Sleeveless shirts must extend all the way to the shoulder seam.



Dresses/Skirts must reach the top of the knee.



Shoes must be worn at all times outside of your cabin.



Tights may be worn under a garment that meets the dress code. No tight fitting or revealing clothing. This includes leggings or similar attire, which cannot be worn as pants.

T-shirts and cover-ups must be worn to and from swimming venues.



male

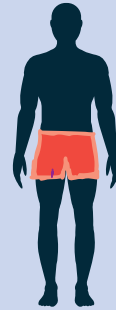
Should wear swimsuits of modest length (fingertip) and not tight fitting



female

Modest one-piece

SWIMWEAR



male

No short shorts/ or tight-fitting shorts



female

No two-pieces

campers may not be barefoot on the way to and from venues.



No tank tops or shirts cut down the sides.



Undergarments must always be covered by outer garments (i.e. no boxer shorts hanging out or bra straps showing).



No Midriiffs/racer backs. No sport bras as tops (includes the 5k).



No spaghetti strap tank tops/dresses.

WHAT NOT TO WEAR

Apparel may not display tobacco, alcohol, controlled substances, or inappropriate language or pictures.

FALLS CREEK YOUTH CAMP 2026 STUDENT INFO

WHAT SHOULD I BRING?

GENERAL

- Modest clothing (see Dress Code)
- Swimsuit (see Dress Code for appropriate suits)
- Bible
- Notepad
- Pen or pencil
- Spending money for concessions or gift shop
- Umbrella and/or Rain jacket
- Flashlight
- A great attitude, willing spirit, & an open heart
- Waterbottle

CABIN ITEMS

- Pillow
- Bedding
- Towels
- Hygiene items
- Sunscreen
- Bug Spray

REC ITEMS

- Skateboard, helmet, and pads (FC provides pads if needed)
- Basketball, Volleyball, etc. (Balls for games are provided)
- Fishing tackle (No fishing knives)
- Ping pong paddle
- Athletic clothing for sports activities (Dress Code still applies during rec)
- Closed toe shoes for ropes courses, etc.

CHECK OUT YOUTH CAMP LATE NIGHT STUFF!

REC IN THE MEC

- Monday MEGA-GAME NIGHT!
- Thursday PICKLEBALL!
- Friday SNOWSTRAVAGANZA!

LATE NIGHT ON THE PLAZA

- Tuesday: OBU on the Plaza
- Wednesday: Block Party
- Thursday: Falls Creek LIVE!

OTHER STUFF!

SWITCH TOURNEY

- Friday - Super Smash Bros & Mario Kart

REC

Check out all of the rec options while you are at camp! Check your Student Guide for all times & locations!

BCM PIN TRADING PARTY

- 3pm Wednesday
- South Lobby of the Tabernacle

MISSIONS

- Check out our 3 mission venues
- Tuesday - Friday. Mission Center, Outpost, and GoMobile

MISSIONS PROJECT

- Wednesday - Friday --- Outpost

MISSIONS OFFERING

Come ready to give during the Thursday Evening Worship Service.



RECREATION OVERVIEW

“THE QUAD” ZIP LINES

- Monday:
2:00pm – 4:45pm
- Tuesday - Friday:
1:30-4:45pm

SWIM TIMES & VENUES

GIRLS’ TIMES

BAPTIST LAKE (LAKE PARK & WATER SLIDES):

Monday 2:00 – 4:45pm

Wednesday & Friday 1:30 – 4:45pm

ENTRY CREEK (INFLATABLE GAMES):

Tuesday & Thursday 1:30 – 4:45pm

BOYS’ TIMES

ENTRY CREEK (INFLATABLE GAMES):

Monday 2:00 – 4:45pm

Wednesday & Friday 1:30 – 4:45pm

BAPTIST LAKE (LAKE PARK & WATER SLIDES):

Tuesday & Thursday 1:30 – 4:45pm



VOLLEYBALL DIVISIONS & TEAMS

VOLLEYBALL DIVISIONS

BLUE – YOUTH GUYS

4-9 Players | Players must be students, no adult leaders

PINK - YOUTH GIRLS

4-9 Players | Players must be students, no adult leaders

GREEN - MIDDLE SCHOOL COED

4-9 Players | Players must be students who just completed 6th - 8th grade, no adult leaders

PURPLE - HIGH SCHOOL COED

4-9 PLAYERS | Players must be students who just completed 9th - 12th grade, no adult leaders

RED - FOUR-ON-FOUR

Max of 5 players, high competition | Players can be male, female, student, or adult leaders but must be from the same church

ORANGE - ADULT LEADERS (FRIDAY ONLY)

4-9 Players | Players can be a mixture of male or female adult leaders with up to two students

NUMBER OF TEAMS

BLUE / PINK / GREEN / PURPLE

One team for 4-59 students

Two teams for 60-110 students

Three teams for over 110 students

RED / ORANGE

Two teams from each church are allowed. More teams can be added on Monday at late night registration, if bracket space allows.

NO ADVANCE SIGN UP!

RIVERFRONT

- Open Horseshoes
- Three Point Shoot-out
- Open Disc Golf
- Open Play Volleyball (After 3pm Tuesday - Friday)
- Adventure Park (Ropes Challenge)
- Tango Tower (High Ropes Challenges)

PRICE'S FALLS

- Bouldering Wall
- Pickleball

THE AMP

- SwiftSkate
- GagaBall
- Cornhole
- 9 Square
- Giant Chess/Checker
- Ping Pong/Jungle Pong

OTHER

- Swimming - Entry Creek, Baptist Lake
- 5K Run/Fun Run - Jordan Welcome Center (6:15AM WRISTBANDS PASSED OUT, 6:45AM FUN RUN BEGINS, 6:50AM 5K BEGINS.)
- "The Quad" Zip Lines - Rounds Corner

ADVANCE SIGN UP!

AT ON-SITE REGISTRATION OR ONLINE

- Kickball
- All Volleyball Divisions

AT DAILY ADULT LEADER MEETING

- Group Challenges on Ropes Course (Low Ropes)

AT THE REC HUT

- Disc Golf Tournaments
- Horseshoe Tournaments
- 3 on 3 Basketball Tournaments
- Three Point Shoot Out

AT THE AMP

- Cornhole Tournaments
- Ping Pong Tournament
- Jungle Pong Tournament
- Falls Creek Open (Skateboard Contest)

