



MAY 2026



Official Newsletter of  
Faith Lutheran Church, Marshfield, WI

# From Wonder to Worship

FROM PASTOR HEATHER BROWN

**“Then Jesus led them out as far as Bethany, and, lifting up his hands, he blessed them. While he was blessing them, he withdrew from them and was carried up into heaven. And they worshiped him, and returned to Jerusalem with great joy; and they were continually in the temple blessing God.” - Luke 24:50-53**

## In This Issue:

**PAGES 01-02**

Wonder to worship

**PAGE 03**

Council Information

**PAGES 04-05**

Education Update

**PAGE 06-07**

Youth Update

**PAGES 08-10**

Mission Team Updates

**PAGE 11**

Calendar

**PAGE 12**

Update your App!

Dear People of God,

When I served a congregation in Nebraska with a strong German Lutheran heritage, it was the first time that I had been a part of a church that observed Ascension Day on an annual basis. Ascension Day happens 40 days after Easter Sunday, and it always falls on a Thursday. The elders in my church in Nebraska remembered that in old times, Ascension Day was truly a “holy day.” People took an official day of rest, attended a special worship service at church and farmers didn’t work in their fields. Though the church members of today no longer hold Ascension Day worship services on Thursday, they always move Ascension Day to the closest Sunday because it still has great meaning for them.

Why is Jesus’ ascension into heaven so important? It’s because it marks the beginning of the days leading up to Pentecost as a “time in between.” The disciples used the time between Ascension Day and Pentecost in order to prepare themselves to receive the gift of the Holy Spirit.

CONTINUED ON NEXT PAGE...

CONTINUED...

Indeed, when Jesus disappears into the clouds, Luke's Gospel doesn't describe the disciples fearfully hiding behind closed doors like they did after Jesus' crucifixion. No. After the disciples witness Jesus' ascension into heaven, they enter into a time of worship. They joyfully go back to Jerusalem where they spend time lifting their praises to God in the temple.

This year we at Faith Lutheran Church will be observing the Ascension of our Lord on Sunday, May 10th . Nevertheless, let's all begin our preparation for Pentecost on Thursday, May 7th – the official Ascension Day. Let's take some time to reflect on what it must have been like for the disciples to see Jesus' glorified body rising up before them, returning to his Heavenly Father. And let's share in their anticipation of the mystical gift of the Holy Spirit's flaming fire on Pentecost Sunday.

Here are the assigned scripture readings for Ascension Day to aid in your preparation: Acts 1:1-11; Psalm 47; Ephesians 1:15-23; Luke 24:44-53.

Love by God – Living for Others,  
Pastor Heather Brown

## SERVICE TIME

IN-PERSON 9:00 AM

## WAYS TO WATCH

1. Live-streaming on our App, Facebook & YouTube.
2. Cable Access 989  
Broadcast Times:
  - Sunday at 12 Noon
  - Monday at 11:30 AM
  - Friday at 11 AM
3. Always access on App, Facebook & YouTube.



## PRAYER LIST

Please keep the following people in your prayers:

Ken Swenson; Ed Willfahrt;  
Darlene Krake's friend,  
Carol; Darlene Krake;  
Deb Rasmussen;  
Maxine Morgan's uncle Don;  
Stan Panek; Dave & Diane  
Herron's niece, Joelle; Diane  
Mueller; Mark Cournoyer;  
Arlene Norberg.

*(Names will remain on the prayer list for three weeks unless otherwise requested.)*

Dairyfest

CHAMBER OF COMMERCE  
MARSHFIELD

2026  
May 29<sup>th</sup> & May 30<sup>th</sup>

Say Cheese,



Marshfield • WI

Dairyfest  
Parade Theme:  
"Say Cheese"  
If you would  
like to walk in  
the parade,  
please contact  
Justin Polzin.



*Pictured Above left to right - Back row: Nancy Young, Pastor Heather Brown, Marty Yohn, Don Streiff, Treasurer Kent Mueller; left to right - Front Row: Alivia (Youth Rep), Chivaun Rabbitt, Renee Stafford, Sally Rakovec, & Jen Smith. Not pictured: Amelia Zellner & Tayllor Thompson*

# 2026-2027 Council

NEXT COUNCIL MEETING  
APR. 26, 2026 AT 11:30 AM

**GOT QUESTIONS?  
COMMENTS?  
CONCERNS?  
REACH OUT  
TO YOUR FRIENDLY  
COUNCIL MEMBERS!**

Email the group at  
[Council@FaithMarshfield.com](mailto:Council@FaithMarshfield.com)

## **FAITH LUTHERAN CHURCH WELCOME STATEMENT**

You Are Welcome. No Exceptions. Faith Lutheran Church affirms you as a child of God, without regard to your age, skin color, ethnicity, physical or mental ability, gender identity, how much you earn, who you love, where you come from, where you are in your faith journey, or what is in your past. You are unique and precious and we welcome you in Jesus' name.

Approved by Council March 22<sup>nd</sup>, 2026

## **FAITH LUTHERAN CHURCH LAND ACKNOWLEDGMENT:**

We gather on the ancestral lands of the Anishinaabe, Ho-Chunk, Menominee, and Stockbridge-Munsee peoples. Central Wisconsin remains home to Indigenous persons—resilient friends and neighbors—who continue to work, worship, and create better futures for all. As a community rooted in faith and stewardship, we commit to listening, learning, and caring for these sacred lands and waters - in the spirit of healing and hope.

Approved by Social Concerns Team  
updated October 2025

### **Council 2026-2027**

**President Nancy Young**

[grayhorse@mac.com](mailto:grayhorse@mac.com)

**Vice President Marty Yohn**

[martyrayyohn@gmail.com](mailto:martyrayyohn@gmail.com)

**Secretary Chivaun Rabbitt**

[proud-mom@hotmail.com](mailto:proud-mom@hotmail.com)

**Treasurer (AP) Kent Mueller**

[treasurer@faithmarshfield.com](mailto:treasurer@faithmarshfield.com)

**Renee Stafford**

[renee.stafford@hotmail.com](mailto:renee.stafford@hotmail.com)

**Don Streiff**

[streiffonclay@tds.net](mailto:streiffonclay@tds.net)

**Sally Rakovec**

[dsrakovec@gmail.com](mailto:dsrakovec@gmail.com)

**Jen Smith**

[jennifersmith70@live.com](mailto:jennifersmith70@live.com)

**Amelia Zellner**

[aldria16@yahoo.com](mailto:aldria16@yahoo.com)

**Tayllor Thompson**

**Young Adult Representative**

[tayllormae@gmail.com](mailto:tayllormae@gmail.com)

**Alivia Schiferl - Youth Representative**

# GLOW

## CARRYING THE LIGHT

FROM CO-DIRECTORS  
JUSTIN POLZIN & BRIANNE THOMPSON

As we reach the end of our education year, we celebrate all that we've accomplished over the past eight months. We hope this year has been meaningful and fun for your family. While the program year is wrapping up, our summer is just beginning, with plenty of opportunities to stay connected in faith and community. Here's a quick look at what's been happening and what's ahead!

### Highlight of the Month

What a joy it has been as we near the end of our school year! From celebrating Easter Sunday to the Sparkler Kids Choir singing on Earth Day Sunday, and a fun-filled Kids Night Out, April was full of faith, laughter, and connection. We are grateful for all the ways our students have grown throughout the year and look forward to celebrating the journey together as we wrap up the program year.

### MARCH HIGHLIGHTS

- April 16 – RISE students served at Feed My Starving Children
- April 19 – The Sparkler Kids Choir sang during worship
- April 24 – GLOW Kid's Night Out
- April 29 – 7th Grade Wednesday Confirmation class wrapped up their year

### What's Coming Up

- May 1 – RISE 7th Grade Overnight at Marshfield School Forest
- May 10 – Sparklers Kids Choir sings for Mother's Day
- May 10 – Carry the Light Sunday (GLOW/RISE Year-End Celebration)
- May 20 – Summer GLOW kickoff

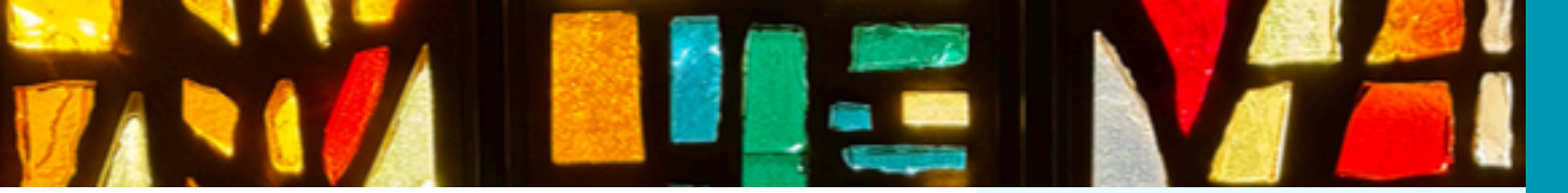
### FLAME – Adult Education Updates:

FLAME continues with No Experience Necessary Bible Study – Unit Two, meeting weekly through the end of May. With an average of six participants each week, this group continues to grow in fellowship, learning, and shared faith. New participants are always welcome.



### RISE – Confirmation Updates:

- May 10 – Students will help lead worship for their Spotlight Sunday
- We are proud of how our students continue to grow in faith through service, learning, and leadership.



### Did You Know?

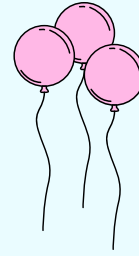


- Our program year wraps up May 10
- We are averaging a 73% attendance rate across 37 students
- 7th grade leads with 87% Sunday attendance and 100% Wednesday Confirmation attendance

We are encouraged by the commitment and growth we see in our students each week!

Brat Fry Fundraiser – June 28 at Festival Foods (Many hands make light work—and it’s always a fun time! – Sign Up Today)

Keep an eye on our website calendar for VBS and Summer GLOW sign-ups.



# Happy BIRTHDAY

### BIRTHDAYS:

- CLAIRE – MAY 9
- BROOKLYN – MAY 16
- CAL – MAY 17
- PETER – MAY 26

### BAPTISMAL BIRTHDAYS:

- LEO – MAY 13

# Happy 100<sup>th</sup> Birthday!



Happy 100<sup>th</sup> Birthday to Marion Rasmussen, our most senior member of our congregation holding her great granddaughter, Hattie, our youngest member of our congregation!

# SUMMER

## GLOW

### MAY 20<sup>TH</sup> 5-8 PM



### PRESCHOOL THROUGH 5<sup>TH</sup> GRADE

VACATION BIBLE SCHOOL

## HEROES OF THE BIBLE

Made Amazingly Simple



SAVE THE DATE



AT FAITH LUTHERAN CHURCH

### AUGUST 3RD-7TH 8 AM - 12 PM

## Fueled by Faith – Serving with Purpose

FROM YOUTH DIRECTOR JUSTIN POLZIN

### FLY - April

April was a productive and meaningful month for our FLY group as we focused on planning and preparing for our upcoming mission trip. We held two leader meetings to organize travel details and logistics. We then gathered for our Mission Trip Retreat, where 17 of our 19 youth and leaders were able to attend. It was a great time to build connections and grow as a team.

We also hosted a successful Dine 2 Donate fundraiser at Nutz Deep. Beyond the financial support, it was incredible to see members of our congregation come together for food, fellowship, and meaningful conversation. That sense of community is what makes events like this so special. Thank you for your continued support, encouragement, and investment in our youth!

### What's Coming Up

- May 1–31 – Little Caesars Fundraiser
- May 3 – FLY Sunday (7th Grade & High School)
- May 17 – Baccalaureate Sunday Service
- May 23 – Memorial Day Flag Placement
- May 31 – Mission Trip Orientation (Option 1)

### Mission Trip Reminders

May 6 – Youth Leaders Meeting  
May 27 – Youth Leaders Meeting  
May 31 – Mission Trip Orientation

### Quote of the Month

“Here am I. Send me!” – Isaiah 6:8

### Looking Ahead

#### Little Caesars Fundraiser (All Month)

- Our youth are teaming up with Little Caesars for a month-long fundraiser. There are a variety of options available—from make-at-home kits to pizza certificates. Each purchase helps support our youth, those going on the mission trip and those who are not. Be sure to connect with a youth or leader to place your order!

#### Memorial Day Flag Placement – May 23

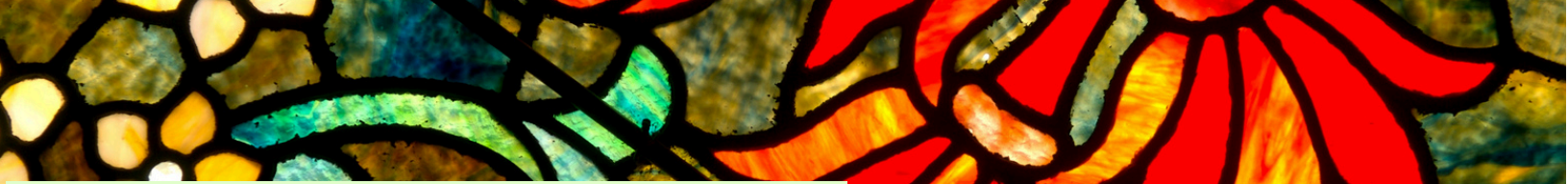
- Join us at Hillside Cemetery as we honor our veterans by placing flags ahead of Memorial Day weekend. Youth are encouraged to wear their FLY or Faith Lutheran shirts. Reach out to Justin for more details.

#### Mission Trip Orientation – May 31

- All youth and parents attending the mission trip are invited to this important meeting. We'll cover travel plans, lodging, service details, packing lists, and more. A second option will be offered on June 3. All going on the trip must come to one of the two or speak to Justin prior to.

### FLY: Faith & Fun

We're excited to work on a new opportunity for our youth to connect—FLY: Faith & Fun! This will be a time to gather for games, food, and fellowship in a relaxed and welcoming environment. Stay tuned for dates and details coming soon!



# Mission Team Updates

## Finance Team Highlights

FROM INTERIM CHAIR ALICIA HEINRICH

- New participation in the Menards Rebate Program is already generating additional support.
- Finance Team is seeking a new chairperson.
- Ongoing conversations about clarifying fundraising efforts and priorities within the congregation.
- Lenten offerings totaled \$2,110, supporting Lutheran Social Services, Homme Home, and Crossways Camping Ministries.

As always, thank you for your generosity in keeping Faith Lutheran strong!



## Treasurer's Report

FROM TREASURER KENT MUELLER

General giving for March 2026 was \$28,620, compared to \$20,406 for 2025 and \$25,481 for 2024. The March general giving was \$3,484 lower than the budgeted amount for general giving (5 Sundays in March, no service on 3/15/26). Income exceeded expenses by \$8,556 for March, much of which was from a donation to the capital fund for roof replacement.

Year-to-date income exceeds expenses by \$12,101. Year-to-date income is higher than budget by \$5,098, expenses are lower than budget by \$3,695, and interest earnings are lower than budget by \$12, resulting in net income that is \$8,781 higher than budgeted.

## WANTED

Do you take advantage of Menards' 11% rebate program when you shop there? FLC uses certain cleaning and maintenance supplies from Menards. A simple way to make a contribution to FLC is to donate your Menards rebate coupons. Simple drop the rebates off at church office, mail them to FLC at 207 S Cherry Ave, Marshfield, WI or put them in the wooden Menards Rebate box by the elevator. Your gift will be a great blessing. Thank you for supporting this effort.

## Care Fund Update



TREASURER ALICIA HEINRICH

During the Month of April, there was one request to help a family. The Finance Team approved assistance for a local family with rent support.

- We reviewed a letter written by 1<sup>st</sup> Presbyterian to send out reminding third-party agency's about the fund.
- We made a motion to update the policy to include a \$1,000 household assistance threshold for future requests.

<b>Balance as of 3/31/2026</b>	<b>\$ 9,412.14</b>
Contributions	\$ 40.00
Distributions	- \$ 500.00
Fees	- \$ .40
<b>Ending Balance 4/29/2026</b>	<b><u>\$ 8,951.74</u></b>



# Memorial and Other Funds Report

FROM TREASURER CINDY PRUST

## Highlights:

- Improvements made to tracking and reporting for memorial gifts.
- New “Green Space” fund established to support outdoor ministry/property needs.
- Easter flowers were fully funded, with extra gifts supporting the Capital Campaign.

For more details or any questions, please contact Cindy Prust. Here are the totals as of 04/01/26:

Undesignated Memorial	\$18,245.33
Flowers & Altar	\$ 2,981.04
Piece Corp	\$ 5,486.03
Music Ministry	\$ 4,273.24
Churkey Ed. Fund	\$ 2,629.28
God’s Work, Our Hands	\$ 984.20
Faith In Action	\$ 987.27
Fresh Expressions	\$ 573.47
Property Improvement	\$ 1,357.58
Kitchen Remodel	\$ 2,570.95
Audio/Visual	\$2,750.00
Green Space-Lot 205	\$2,863.00

# Endowment Fund Report

TREASURER LORI BENTS

## Endowment Fund Updates

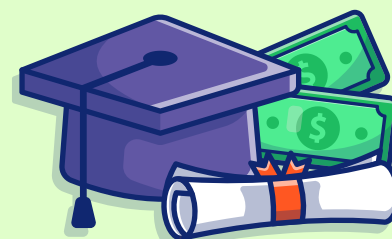
- New officers elected and a new checking account is being established.
- Youth ministry request approved, including support for leadership development.
- Endowment remains strong, with total funds nearing \$284,000.

Total of accounts as of 2/28/2026 is 293,163.45  
Balance Available for 2026

• VASIX Malueg	<u>\$2,139.63</u>
• VSCGX Sabrowsky	\$7,426.51
- 950.00 for Staff Continuing Ed	
	Total left : <u>\$6,476.51</u>
• VSMGX General	<u>\$3,344.13</u>

# Scholarships available.

Students planning to attend a Lutheran college this fall may be eligible for a partial tuition scholarship. Please submit an application for an Endowment Fund Scholarship by May 15, 2026. See website to download application. Send to [endowment@faithmarshfield.com](mailto:endowment@faithmarshfield.com).



# Endowment Fund



## Mission Team Updates

### Facilities Management Team

CHAIR PAM JOHNSON

#### Highlights

- Building Damage: The church has experienced recent damage to the building. We are currently awaiting cost assessments. The repairs will be covered by the driver's insurance company. The congregation will be informed as additional updates become available.
- Basement Hallway Improvement: Painting has begun in the basement hallway. Our youth group has taken the lead on painting the large wall across from the elevator.
- Security Enhancements: Exterior security cameras are scheduled to be installed within the next month to improve building safety.
- Emergency Contacts Updated: Emergency contact information has been updated with local police/911. Current contacts are Ryann Rhodes, Pam Johnson, and Justin Polzin.
- Insurance Update: Our policy has been reviewed and updated with Church Mutual to ensure appropriate coverage.
- Roof Maintenance: Following the significant April snowstorm, a leak was identified in the flat roof above the Upper Room. Quality Roof responded promptly, and the issue was resolved by clearing the roof vents.
- Ongoing Maintenance Discussion: Conversations are underway regarding the cleaning and maintenance of window wells.

## Feed My Starving Children Update

FROM SUE VICK

A sincere thank you to everyone who volunteered at the recent FMSC MannaPack event. Your generosity and service are a meaningful reflection of our church community in action. Faith Lutheran Church was represented by 35 volunteers and contributed \$1,345 in donations.

Together, participants packed an incredible 720 boxes of meals—totaling 155,550 meals. This effort will help feed approximately 426 children with one meal a day for an entire year.

Additionally, volunteers from the Marshfield area have packed over 3 million meals in the past 15 years.

Feed My Starving Children (FMSC) is a Christian nonprofit organization dedicated to feeding God's children who are hungry in both body and spirit.

This work is a powerful reminder that we are truly God's hands in the world.

Sponsored by the Worship & Music Team

## Worship & Music Team

CHAIR LINDA NELSON-SCHREIBER

W&M has determined three outdoor service dates: June 28<sup>th</sup>, July 26<sup>th</sup>, & August 23<sup>rd</sup>.

We received donations to give to Feed My Starving Children volunteer event. We received \$500 from the God's Work Our Hands fund, \$500 from the FLC Women's group, and \$345 in congregational member donations. Special thank you to Sue Vick for organizing such a successful event.

# Mission Team Updates

## Communication Team Highlights

CHAIR TOM LOUCKS

### AI Usage Policy in Progress

- The team is developing guidelines for the appropriate use of artificial intelligence (AI) in church communications. This includes a commitment to transparency, with plans to disclose AI assistance when appropriate (e.g., “reviewed by,” “revised with,” or “created with assistance from” AI).

### M&M Fundraiser Update

- The team reviewed progress toward the fundraiser goal and will continue to share updates with the congregation as the campaign moves forward.

### Brand Guide Finalized

- A new brand guide is ready for implementation. It includes clear standards for logo usage—such as maintaining proper proportions, using approved fonts, avoiding distracting backgrounds, and preserving official logo colors—to ensure consistency across all communications.

### Website Refresh Ongoing

- Updates to the church website are underway. Remaining items include adding information on mission teams, endowment resources and forms, a land acknowledgment, and a refreshed welcome statement.

### Annual Calendar Planning

- The team discussed responsibility for organizing the annual church calendar meeting to ensure better coordination across ministries.

### Welcoming Spaces Initiative

- Initial conversations began about enhancing the church’s front entry to create a more modern, inviting, and family-friendly first impression. Marty to help oversee and work with Council and other teams on.

### Cyber Fraud Warning

We want to make you aware that some members of our congregation were recently targeted by a phishing scam. Please know that no one from Faith Lutheran Church will ever ask you to make purchases or provide gift card information. If you receive a suspicious message, verify the sender’s email (Pastor Heather’s is pastor@faithmarshfield.com), and use your email provider’s “report phishing” feature. If you have already responded or experienced financial loss, contact your bank or card provider immediately, report the incident to local authorities and online at ic3.gov or reportfraud.ftc.gov, and notify the church office so we can assist and monitor the situation.

The graphic features a green-to-yellow gradient background. At the top left is the M&M's logo, and at the top right is the Faith Lutheran Church logo. The main title reads "Quarters for Capital" in red and "FUNDRAISER" in large, colorful letters. Below this is a three-step list: 1. Eat M&Ms (pick up from FLC Office), 2. Fill with Quarters (holds up to \$13 dollars!), and 3. Return to FLC Office (by Thursday May 14th, 2026). At the bottom left is an image of several M&M's tubes. To the right of the image, the goal is stated: "The goal is to fill 70 tubes and raise over \$1,000". At the very bottom, it says "Put on by the Communications Team of FLC to help meet our Capital Campaign Goals for 2026."

**ROOM LEGEND/KEY**

- CH = Choir Room, Basement
- CR = Community Room, Basement
- ED1 = Education Confirmation Room 1, Education Wing Upper Level
- FH = Fellowship Hall, Basement
- GA = Gathering Area
- MO = Mission Team Volunteer Office, Main Level Sanctuary Hallway
- SA = Sanctuary
- UR = Upper Room

# May 2026



Sun	Mon	Tue	Wed	Thu	Fri	Sat
<p><i>Fundraisers this Month</i></p> <p><b>FLY</b> <span style="color: red;">█</span></p> <p><b>Communications</b> <span style="color: blue;">█</span></p> <p><b>Personnel</b> <span style="color: orange;">█</span></p>	<p><i>Little Caesar's Fundraiser</i></p> <p><i>M&amp;M Fundraiser</i></p> <p><i>Brat Fry</i></p>				<p><b>Office &amp; Building CLOSED</b></p> <p><b>5:00 RISE Overnight at School Forest</b></p>	<p><b>2</b></p>
<p><b>3 9:00 WORSHIP</b></p> <p>10:00 GLOW/FLY/ FLAME</p> <p>10:15 W&amp;M Meeting OM</p>	<p><b>4</b></p> <p><b>Office Closed</b></p> <p>6:30 Social Concerns/ Green Zoom Mtg</p> <p>6:30 Facility Team Mtg</p> <p>7:00 <i>Al-Anon</i></p>	<p><b>5</b> 9:30 Peer to Peer in CR</p> <p>10:00 Staff Mtg in UR</p> <p>11:00 Staff ED Mtg in UR</p> <p>12:15 FLC Women in UR</p> <p>1:00 Book Club in UR</p> <p>6:30 AED Training at Fire Dept.</p> <p>7:00 Boy Scouts #382</p>	<p><b>6</b></p> <p>5:30 FLY MT Leader Mtg</p> <p>6:00 NA Meeting in CR</p>	<p><b>7</b></p> <p>8:00 Piece Corps</p> <p>8:30 Finance Team Mtg</p> <p>6:30 Ed &amp; Fam Team Mtg</p>	<p><b>8</b></p> <p><b>Office &amp; Building CLOSED</b></p>	<p><b>9</b></p> <p>11:00 Bill Churkey Funeral at Hansen-Schilling</p>
<b>PASTOR HEATHER BROWN OFFSITE</b>						
<p><i>10 Mother's Day 7th Grade Spotlight</i></p> <p><b>9:00 WORSHIP</b></p> <p><b>Sparklers Kids Choir</b></p> <p><i>Temple Talk: Education</i></p> <p>10:00 GLOW/FLAME</p> <p>10:15 Refresh in God's Word</p>	<p><b>11</b></p> <p><b>Office Closed</b></p> <p>7:00 <i>Al-Anon</i></p>	<p><b>12</b></p> <p>9:30 Peer to Peer in CR</p> <p>10:00 Staff Mtg in UR</p> <p>11:00 Staff ED Mtg in UR</p> <p>7:00 Boy Scouts #382</p>	<p><b>13</b></p> <p>5:30 Youth Advisory Team</p> <p>6:00 NA Meeting in CR</p>	<p><b>14</b></p> <p>8:00 Piece Corps</p> <p>6:00 Communications Mtg</p> <p>7:00 Scout Troop 345</p>	<p><b>15</b></p> <p><b>Office &amp; Building CLOSED</b></p> <p><b>BRAT FRY at Festival Foods</b></p>	<p><b>16</b></p> <p>9:00 Praise Band Practice</p> <p>9:00 Yard Clean-up</p>
<p><i>17 Baccalaureate Sunday</i></p> <p><b>9:00 WORSHIP</b></p> <p><b>PRAISE BAND</b></p> <p>10:00 FLAME</p> <p><i>Temple Talk: W&amp;M</i></p>	<p><b>18</b></p> <p><b>Office Closed</b></p> <p>1:30 PM Ruth Circle at Maxine Madelon's House</p> <p>7:00 <i>Al-Anon</i></p>	<p><b>19</b></p> <p>9:30 Peer to Peer in CR</p> <p>10:00 Staff Mtg in UR</p> <p>11:00 Staff ED Mtg in UR</p> <p>1:00 Altrusa</p> <p>1:00 Personnel Mtg</p> <p>7:00 Boy Scouts #382</p>	<p><b>20</b></p> <p>9:00 Miriam Circle</p> <p>9:00 Elizabeth Circle</p> <p><b>5:00 SUMMER GLOW</b></p> <p>6:00 NA Meeting in CR</p>	<p><b>21</b></p> <p>8:00 Piece Corps</p> <p><b>NEWSLETTER DEADLINE</b></p> <p>6:00 Faith in Action Mtg</p>	<p><b>22</b></p> <p><b>Office &amp; Building CLOSED</b></p>	<p><b>23</b></p> <p>10:00 Flag Placement Event at Hillside</p>
<p><b>24 9:00 WORSHIP</b></p> <p>10:00 FLAME</p>	<p><b>25 Memorial Day</b></p> <p><b>Office Closed</b></p> <p>7:00 <i>Al-Anon</i></p>	<p><b>26</b></p> <p>9:30 Peer to Peer in CR</p> <p>10:00 Staff Mtg in UR</p> <p>11:00 Staff ED Mtg in UR</p> <p>6:00 NAMI Meeting</p> <p>7:00 Boy Scouts #382</p>	<p><b>27</b></p> <p>5:30 FLY MT Leader Mtg</p> <p>6:00 NA Meeting in CR</p>	<p><b>28</b></p> <p>8:00 Piece Corps</p> <p>7:00 Scout Troop 345</p>	<p><b>29</b></p> <p><b>Office &amp; Building CLOSED</b></p>	<p><b>30</b></p> <p><i>Dairyfest Parade</i></p>
<p><b>31 9:00 WORSHIP</b></p> <p>10:00 FLAME</p> <p>12:00 FLY MT Orientation</p>						<p><i>Updated 04.21.26</i></p>

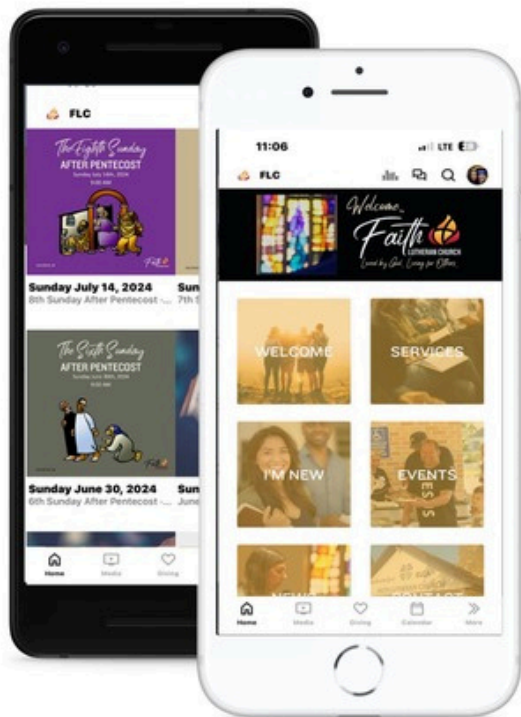


207 S Cherry Ave.  
Marshfield, WI 54449  
www.faithmarshfield.com  
office@faithmarshfield.com  
715-387-3757



**Office Hours:**  
Tuesdays-Thursdays 8:30 AM-2:30 PM

**Service Time:**  
Sundays 9:00 AM



*update  
available*

Faith Lutheran Church Marshfield

Available in App Stores



**DOWNLOAD TODAY**  
<http://get.theapp.co/n4rm>