

St Paul's Church Annual General Meeting

Advance Information

Tuesday 19 May 2026 7pm

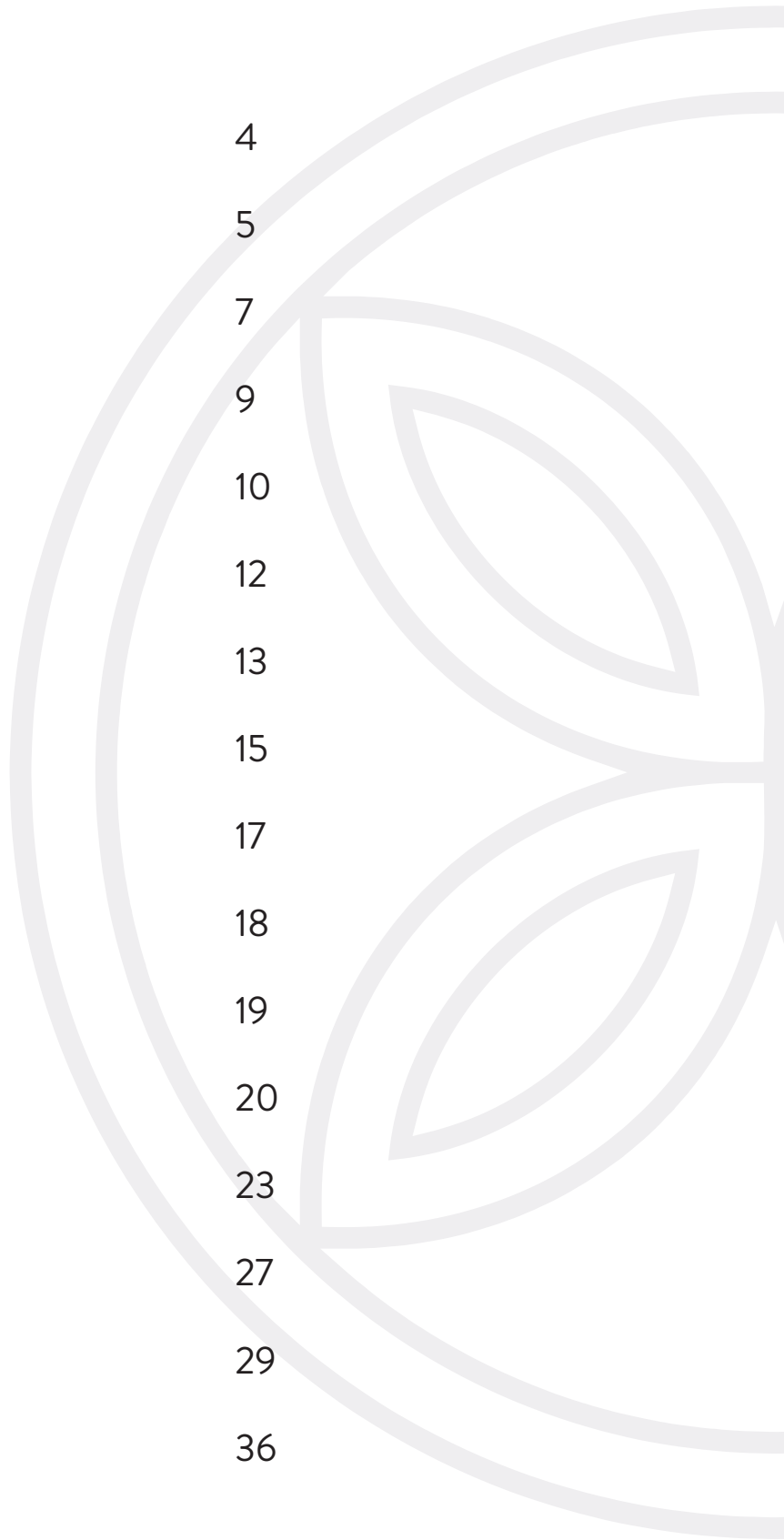


ST PAULS

52 SYMONDS ST | hello@stpauls.org.nz | +64 9 373 3268
GRAFTON
AUCKLAND 1010

CONTENTS

Agenda	4
Executive Summary	5
Worship & Prayer Life	7
Small Groups	9
Unify	10
Pastoral Care	12
Families	13
Youth	15
International Ministry	17
Mission & Evangelism	18
Creation Care Kaihāpai	19
Building & Restoration	20
Operations & HR	23
Treasurer's Report	27
Minutes of 2025 AGM	29
Annual Accounts 2025	36



AGENDA

2026 ST PAUL'S AGM 19 MAY

Welcome & Worship

Official AGM Resolutions

Receive the name of Vicars Warden

Election of Vestry and People's Warden

Treasurer's Report

Warden's Report

Youth Report

Pastoral Care Report

Unify Report

Vicar's Report

Election results

Any other business

Communion

Worship

Close in Prayer

EXECUTIVE SUMMARY

I have been teaching our eldest to drive recently, and I've been reminded how essential it is to regularly check the rear-view and side mirrors. It's something that becomes second nature over time, yet when learning, it requires constant attention. Every few seconds: look back, look around so you can deal with what's ahead. In many ways, our AGM serves the same purpose in the life of the church. It is an opportunity to look back and look around, so that we can look ahead in this fun-filled adventure of following Christ together.

The first thing to mention when we look back, is not simply what has happened, but who we are with. Our church is full of wonderful people who serve generously and I want to thank all those represented in these reports. I also want to thank our Vestry and our wardens, Elizabeth and Dave, for their friendship, wisdom and leadership at St Paul's. Our staff team are amazing. Those who serve on Sundays - Milly, Grace, Liesl and Izzie, Victor and now Lupe. Anjali on our communications and Lauren who still works for us from London, as well as Liz in connections. Then we have those who are in the office more regularly - Jodelle, Jen, Matt, Ian, Chris, Sal, Natalie, Shelley and Rachel - thank you. Together we pray, share meals, laugh, cry, and do life together. You guys rock and you can't go anywhere.

Some of the highlights for me looking back are actually the small day to day miracles, the people who say yes to serving, those who respond to what God is doing in their lives and the organic life that just happens. I think of the AI seminar we held with Sam Wells. Timothy Kasbe knew him, so over a conversation we said let's do this and we did. In the same way, Mel Cooper and myself ran the 'Belonging in this Land' series last year. There have been many events along the way like this. Also, there are many bigger storylines:

5:30pm Service: The merging of the 3pm and 6:30pm services, although a lot of work, has proven fruitful. We are seeing a growing mix of ages and stages, particularly with the youth group and university age range growing. The earlier finish has encouraged connection, with people staying longer to chat. It feels lively and full.

24/7 Prayer Nights: Hosting these gatherings has been a privilege. Fostering unity across the city and creating space for prayer, renewal, and spiritual awakening.

Church Camp: After many years, the return of a church camp has been a highlight. This is next level community over a weekend of fun and worship together. As we look ahead, this is an invitation for everyone, not just families. If you don't like bunk rooms, come down for a day on the Saturday, or book an airbnb. This is the 185th celebration, St Paul's on the road!



In a recent sermon, we reflected on Jesus' teaching about building a house on rock rather than sand. The reality is that storms will come, they always do, but what matters is the foundation.

That feels in many ways the same as our lives now. If we are a people who want to build on rock, what does that look like for us as a church? It means we don't just talk about God-centeredness; we organise our whole life together around it. We follow in his footsteps so when the rains keep coming, the storms still rise and the winds still howl, because it will, we are still here. We don't let the sandcastle erode so to speak, we continue to worship and pray with Jesus, to follow the way of Jesus and see lives and communities transformed for Jesus.

As I then look ahead, I see a team modelling healthy rhythms, including rest. Chris is currently on leave, and from July to September I will be taking a sabbatical, having now been ordained for 17 years. Apparently, the 17th year symbolises the strength of the home and life built together, fitting as we build God's church as family. During my sabbatical I will be completing a post-grad in ministry through Otago and heading back to the UK in August for three weeks. This will include a week's retreat at Ffald y Brenin in Wales, a retreat centre with links to the Welsh revival, so I look forward to that pilgrimage. In my absence, Matt will be stepping in as Priest in Charge supported by the wider staff team, with the Diocese providing additional support. My return will coincide with Church Camp in the spring!

Looking ahead, I feel a clear call to deepen our engagement in serving students, and I want to thank both Ian and Michael for their work in this area. I also see a continued call to pray with and join with other churches; to wrestle with how best to serve the universities; to help with Auckland's homelessness; and to be increasingly shaped into the likeness of Christ as a community. As we celebrate 185 years of St Paul's this year, we shine our values to a city needing hope, joy, love and peace. Thank you for the year that's been, let's be excited about who we are and who God is calling us to become.

Rev Pete Watson
Vicar



WORSHIP & PRAYER LIFE

In light of Chris being on leave at the time of the AGM and Sally being unable to join us, we have chosen this year to present a combined Worship and Prayer report. This feels particularly appropriate, as worship is prayer expressed through music, and prayer itself is an act of worship.

Over the past year, we have seen significant growth and encouragement across both worship and prayer ministries. One notable highlight has been the release of our song, *At the Table*. This song has bubbled up over the last year at St Paul's and is now available for the world to enjoy. It was recorded in our studio, featuring members of our own community, and represents a considerable investment of time, creativity, and effort. It has been a joy to see our congregation embrace the song. Over the past few years, songwriting has become an area of intentional development, and we are beginning to see the fruit. Several new songs are currently in progress, and we look forward to singing them with you all.

Our Christmas Carol services were again a significant highlight. In particular, the introduction of our new carol, *Unexpected*. The inclusion of a choir and string section for the service was amazing. We are hopeful that the carol will be recorded and released this Christmas, subject to funding. Each year, these services welcome close to 1,000 people, providing a valuable opportunity to share the Christmas story with our wider community.

The Youth Band continues to be an important part of our worship life. We are grateful to Dave and Zoe for their leadership and commitment to our high school-aged musicians. It has been especially encouraging to see our young people transition from the Youth Band into the wider worship team.

We are also deeply thankful for the many individuals who faithfully serve across our worship and AV teams. Their commitment, skill, and willingness to serve each week are invaluable. It is a privilege to witness the glory of God shine through their gifts. Thank you for all you do.

Prayer continues to be central to the life of St Paul's, expressed in a variety of ways throughout the year. The 24/7 Prayer nights have been a significant development, bringing together worship and prayer a powerful way. These evenings, which now take place three times a year during the 5:30pm service, have replaced the former 'Deeper' nights. Over the past two years, we have partnered with six other churches across the city, creating space for unity, shared worship, and intercession. We are grateful to 24/7 Prayer New Zealand for their ongoing partnership in hosting these gatherings.



The River, our monthly prayer ministry evening, remains a vital expression of extended prayer within the church. These gatherings provide space for individuals to receive prayer for any area of their lives. Thank you to The River team for your dedication to prayer!

Prayer ministry is also a defining feature of our Sunday services. It's who we are and we believe God is moving and speaking to us. This is supported by a committed team who give their time to stand alongside others in prayer. We are deeply grateful for their faithfulness and willingness to serve in this way.

St Paul's Women's retreats and events have continued to flourish under Sally's leadership. These gatherings have created meaningful opportunities for connection, testimony, and encouragement, and we consistently hear of the positive impact they have on those who attend.

The Prayer Room, in the Lady Chapel, remains an important resource for both personal and corporate prayer. It is available before services and throughout the week, offering a dedicated and reflective space within the church. Thank you Rachel Mawdsley for thoughtfully curating this space. We encourage everyone to make use of this sacred space.

As we reflect on the year that has been and our ongoing prayer for awakening and renewal. One of the songs we sing captures this desire:

"We have heard of all the stories of how You healed the deaf and blind. You did miracles and wonders, would You repeat them in our time... We've prayed our prayers and made our plans but if You're not in it, we don't want it, oh God would You move"

In an age of chaos and uncertainty this remains our prayer!

Rev Pete Watson, Chris Cope and Sally Shanks



SMALL GROUPS

Research consistently shows that spiritual formation happens most deeply in relational settings. The Barna Group's discipleship research highlights that Christians who participate in small groups are more engaged in Scripture, prayer, and church life, and are more likely to sustain their faith over time. Small groups provide spaces where people are known, supported, and encouraged to integrate faith into everyday life. For churches seeking long-term health and vitality, intentional small-group ministry is not optional — it is foundational. Our small group leaders offer spaces for deep connection, hospitality, formation, and prayer while juggling many other commitments. So, again, a massive thank you from us for your discipleship, leadership, care and hospitality!

Ian and I are also hugely grateful for the support of Liz de Marigny who has been volunteering in our connections space and helping connect people into small groups. Her natural way with people and organisational skills have been a real asset to our team over the last year.

Currently we have 20 small groups that meet at various times and places during the week, with different focuses from students and young adults to women's, men's, and mixed groups. This year we have also seen three new small groups start, one for the University age, one for 25-35 age, and one for those in their 40-50s. This is really encouraging for us to see and are keen to see more of this happening at St Paul's.

We have also hosted several Hello Brunches, for new people attending St Paul's as a way of helping them connect into the life and vision of St Paul's. We also hosted several Small Group Leaders Gatherings, fostering connection and focusing on encouragement/development for our leaders. Our hope and prayer is that more people who call St Paul's home would join or start a small group and experience the benefits of doing life together and deepening their faith in community. Small groups are not simply a programme — they are a core structure for community, discipleship and where people learn to follow Jesus in the context of everyday life.

Rev Matt Bruns and Rev Ian Yong
Associate Priests



UNIFY

Hello everyone! We are Isaiah and Gabby, and we are currently the leaders of Unify. Unify is the umbrella name for small groups for uni-aged young adults at St Paul's, and we currently have two groups: one that we have been a part of since 2023, and a new one that's started just this year for younger uni students, Unify 2.0.

In Unify, we have about 14 members including ourselves. We start with a time of socialising and enjoying snacks. Since we've been journeying together for a while now as a group, many people have said that this time is what makes the group so special. It's a space where we can really be friends. Then we read a Bible passage together and split into smaller groups to do a Bible study. We have adopted and slightly adapted the Disciple Making Movement (DMM) model of keeping the questions simple, open and reflective. To finish, we break off into pairs and pray for one another.

Some highlights we would love to share with you are that we had high involvement in our lolly handout outreach for this year. This form of outreach is where we pack lolly bags and attach informational cards about St Paul's and our services for students, and then hand them out to students walking past St Paul's in the first week of the semester. We had four of us packing lollies. And 10 of us were there to hand them out to students! We think this is really huge. That many of our young people were willing to do something that is honestly a bit intimidating. To put themselves out there for the sake of the students right on our doorstep and to invite students into our community with love. It is a central goal of ours not just to be an inwardly looking group, but to always remain thoughtful about looking beyond ourselves to see who we may be able to welcome into our church.

Another highlight is the farewell party we threw for our friend who was returning back to Japan after six months in New Zealand. It felt like way longer than that since we had all become such good friends. Her heartfelt sharing about the impact this period in NZ had had on her life I think really encapsulates how Unify is not always a long term space for everyone who joins. But it is a safe space of support and love from which people can go onto new chapters in their life. Knowing that there is a small group of us here in New Zealand who will always love them and be cheering them on. And that is a privilege and unique honour of being a small group for people who are in the transitional, formative, and transformative stage of our early 20's.



As we mentioned in the beginning, St Paul's has started up a second Unify for first and second year uni students! Most of us in the group that has been running for the past few years are getting older and many of us are preparing to graduate. We recognised that the newer students needed a space of their own where they can journey with people who are in the same life stage as them.

We have done a few socials for them to get to know each other and recently started an Alpha course to facilitate some open and honest conversations about life and God. Similar to our older group, we start with some time of eating snacks together to socialise, connect and just chat about life. And then we get started on the Alpha content. It's been very exciting to have a space especially for the new students who move up to Auckland and have found their way to St Paul's!

A cool story that we've already been able to experience is that one of the girls in our group brought along two of her friends in the first week. These two young girls were not Christians, but since then they have been consistently attending Unify and committed to coming every week to church. It has been an encouragement to see the hearts of the young adults to invite their friends, and reassuring to know that St Paul's and Unify has been a welcoming space for these young people to continuously return to.

It makes us even more excited about the Alpha series that we are running at the moment. As Alpha provides a space for us to start off on the same foot as a small group, and build a good foundational understanding of the gospel we believe in. We've also found that the people-focused questions have led to real heartfelt conversations where everyone is confronted with life's bigger questions, who God really is and what He means to each of us.

Obviously we could not do this on our own. God is watering and growing this ministry with amazing provision and love. And He has used some incredible people in our community we want to give a quick shout out to.

- Pete and Matt who give wisdom, discernment, accountability and remind us not to carry more than we should.
- Tracey who took a humble step of faith when she saw a need and started our Unify group in 2023.
- Prayer team who has been powerfully supporting us behind the scenes.
- Parents of the students in the younger Unify who have been helping with providing snacks!
- And anyone else who has been praying for us, invited young adults in their life to join, or welcomed and introduced a newcoming uni student to us.

It's amazing to see the church family wrap around us and provide guidance, but also space as we become more independent and responsible for creating a space for us and our peers to grow closer to God.

Isaiah Meek and Gabby Yong

PASTORAL CARE

Research shows that personal care and relational support are central to the health and wellbeing of a church community. Barna Group studies highlight that people who feel genuinely cared for within their church are more likely to remain connected, resilient, and spiritually engaged — particularly during times of challenge. In a cultural moment marked by loneliness and distrust of institutions, pastoral care builds trust, fosters belonging, and reflects the heart of Christ. Strong pastoral care systems are not only about responding to crisis, they are about cultivating a community where people are known, supported, and able to flourish.

Pastoral Care Volunteer Team

Our St Paul's Pastoral Care Volunteer Team has been up and running for over a year now, helping to create a wider support system across the various layers of our church life. These team members are mature and committed members of St Paul's who have the relevant temperament/skills/giftings for this ministry. Team members are Rebecca Jamieson, Dave and Jess Donaldson, Marion and Peter Vosloo, Nicole Skinner and Vivienne Martin. Sally Pritchard has stepped back for 2026, but I want to thank her for her contribution. I want to thank this team for their dedication to prayer, developing a safe and effective practice, and for the ways they are supporting people during crisis or challenging seasons or events in their lives. We are so blessed to have this team!

One of our team said the following:

"The supervision and diocese training sessions have been invaluable and highlights for me personally. Highlights in the actual PC space: it's such a privilege to be able to journey alongside people through both the highs and lows of life, being a supportive presence to convey God's compassion to people within our church whānau. The reality for all of us is that life can be really tough and we all go through challenging seasons and sometimes we need to have a place to be seen in that and a place where we can be open and honest about it. Pastoral care can be that space."

Courses and Events

Last year we hosted two evenings called Flourishing in an Online World and Why Art Matters. These were both well attended and provided spaces for people to be better equipped to celebrate beauty and creativity and navigate the challenges in our fast-changing online world. The online seminar with Sam Bloore explored practical ways of equipping our parents with children and young people navigate the digital space well. A huge thank you to Sam Bloore for his outstanding work in these spaces providing valuable resources that can inform and shape our lives.

Angel Food

A huge thanks to all those from our church whanau, and various small groups and youth who help keep our Angel Food freezer stocked up. If you would like to help with this wonderful ministry, please contact jennifer@stpauls.org.nz

Fellowship Fund

This exists to provide subsidised or free counselling for church members in need who cannot afford to access therapy. This fund is almost depleted, so if you would like to donate, please use the following account number 12-3011-0829280-03 with the reference 'Fellowship Fund'.

Pastoral care is not only a spiritual responsibility, but a critical contributor to congregational wellbeing. When people feel seen, supported, and prayed for, trust deepens, faith stabilises, and the church becomes a place of refuge and healing.

Rev Matt Bruns
Associate Priest

FAMILIES MINISTRY

It is an absolute joy to get to work with and support our Kids Church teams. We are so thankful for everything God has done in the past year!

First, I would like to acknowledge the incredible team that makes this all happen. Milly in Kids Church, who puts her heart and soul into this space. She is passionate about discipleship and consistently creates a fun and engaging space and seeks to make every child feel included.

Lisel and Izzie who run our preschool spaces. They have adapted so well to a changing environment this year, stretching themselves to make what we do even better. Bringing the creativity, all while caring deeply for each preschooler!

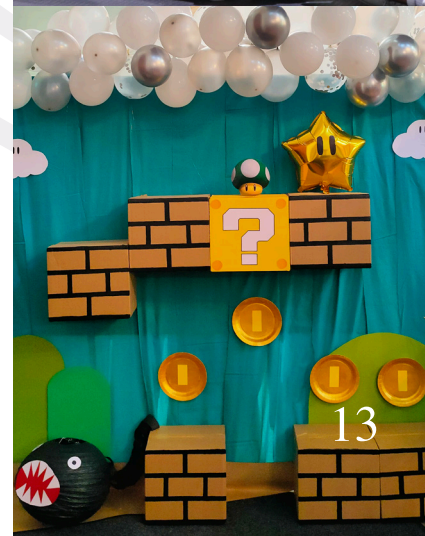
This year we said farewell to Grace, who has been an incredible member of our Kids Church team. While we miss seeing her on a regular basis in this space, we look forward to seeing her around. And we are so excited to see what is next for her as she wraps up her degree and goes traveling!

Esther is joining the Kids Church team as the Year 6 group leader and leading Kids Church alongside Milly. She has just graduated from AUT with a Bachelor of Teaching (ECE) and is starting her teaching career shortly. She was born and raised here in Tāmaki Makaurau with her whānau from Rwanda and Ghana. She first came to St Paul's in 2024 and was baptised here last November. She is passionate about Jesus and working with young people. And we are really excited what Esther will bring to this role and her leadership with our tamariki.

Our preschool space has been growing and developing over the past year. We sought some advice on how to improve our programmes, and this has led us to take a much more interactive approach in our Sunday mornings. Our preschoolers join in on the story to encourage more embodied learning, and they absolutely love singing and dancing to songs about Jesus! Change can take some time to adjust to, thank you parents for your support as things have been shifting. It has been so cool to see several of our little ones having more fun and becoming much more settled into our preschool rooms as a result of these changes.

Some of our preschool rooms have undergone some renovations this past year. Due to the unfortunate flooding that took place at the beginning of the year, Rockets has been completely redone and now feels so much more welcoming than ever! We (our team and the kids) love having more colour in the room and the new plush play mat is an absolute hit.

There was also a growing need to provide a space for parents to be with their little ones during the service, that was beyond the space we currently had. This led to us revamping the Tiny Stars room to become a delightful and welcoming space for parents of babies and toddlers to spend time together during the service. We thank everyone for donating to help us install an AV system so they can be more connected with the main service. There has been some delay in the shipping of the equipment from overseas, but it is on its way, and we look forward to having it as soon as possible.



In Kids Church we have been using Go! Curriculum for over a year now. It has been so cool to see how it has helped our kids engage in learning. A couple highlights for us have been how they are beginning to get a picture of the Big Bible story. Every lesson, they learn how each story fits into God's big story. It is a delight to witness the moments where things click for them, and they get excited seeing the pieces of this incredible story come together. One of the things we are most excited about in the past year is we have also introduced what we call 'Reflect and Response Stations'. Near the end of a lesson, there are stations around the room for the kids engage with and to respond to what they have learnt and what God is doing in them. The stations are often based around prayer and journaling, bible reading, and art. While our roles in kids' ministry is to point our little ones to Jesus, we are also intentionally creating spaces where they can grow their own relationship with God for themselves. The engagement we have seen in these stations is so beautifully reflecting the kid's heart and desire to know God more.

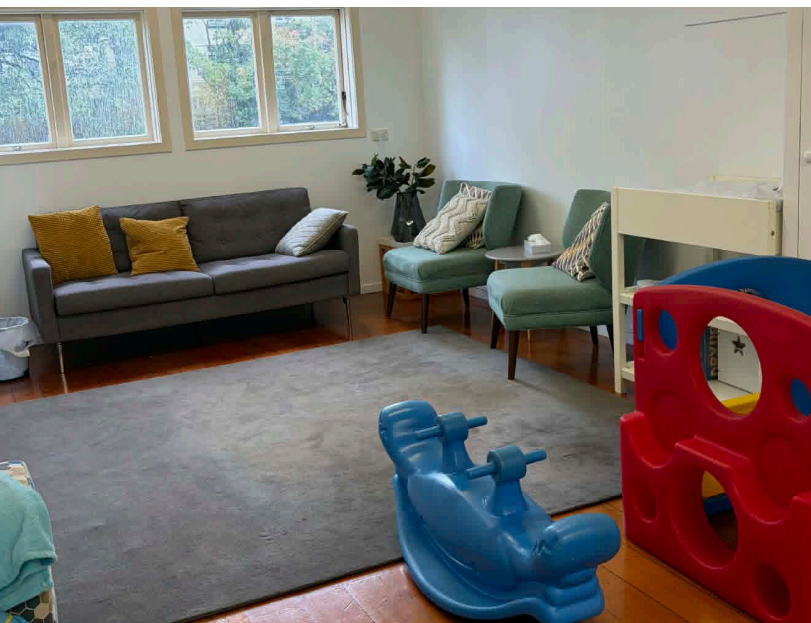
We have also introduced a group for our Year 6s. Until we did this, all our tribes in kids church were mixed age except for the youngest group, Salt. It became apparent to us how important is it to adapt the learning for the age and stage of not only the youngest kids but also the oldest in the room too, while providing a transition space from kid's church into youth. This has been a game changer for our Year 6s! Not only has it increased their desire to be a part of Kids Church but has also helped to solidify friendships with those in their year level that they will then enter Zeal (our intermediate space) with. They have absolutely loved the group as well as the year 6 socials. A huge thanks to Grace, who worked with the team and the Year 6s to make this group what it is!

We also had a blast at a bunch of our families events throughout the year, especially at our Super Mario Bros themed Carnival and our Princess Bride inspired Nativity!

We have just had our 1:1 camp at the end of March, which as always was a fun highlight as well as a space for intentional time for parents and their kids to connect! Big thanks to Donald who ran this event up at Kariotahi Beach.

As always, we want to thank all our other volunteers who support our kid's ministries, we could not do it without you! We are filled with thankfulness when we look back at what God has done over this past year and we are looking forward to all that is ahead for us!

Natalie Williams Boag
Youth & Families Leader



YOUTH

Adolescence is a uniquely formative time for faith. According to the Barna Group's research on today's generation of teens, more than three-quarters say they are motivated to continue learning about Jesus throughout their lives — with over half reporting they are very motivated to do so. This stage of life is not just about participation, it's a period when beliefs, values, and worldviews are actively shaped. Yet, other Barna research shows that without intentional discipleship, community, and meaningful mentoring from caring adults, many young people struggle to carry their faith into adulthood. This underscores the vital role our Youth ministry space plays: not just as a gathering place, but as a formative environment where curiosity about Jesus can be grounded in relationship, teaching, and lifelong faith development. Even as broader cultural trends show challenges for faith in society, recent Barna data also points to renewed interest and commitment to Jesus among younger generations, suggesting that teens and young adults are spiritually open and responsive when given space for authentic engagement.

We are cognisant of these realities and challenges and continue to pray and work hard to develop and grow our Youth ministry at St Paul's as part of our core focus and vision. Youth is divided into three age groups:

- Zeal (school years 7-9)
- Core (years 9-11)
- Testify (years 11-13)

These groups provide spaces for youth to grow deeper relationships with Jesus in a way that relates to their age and stage. On Sundays, we have Zeal during the morning and Core & Testify during evening services. On Friday's during the school term, we facilitate a fun and formative space for our youth to connect, belong, and develop deeper relationships with Jesus with the intermediates (Zeal) and high school (Core & Testify) meeting on alternate nights.

Natalie has been in the role as Youth and Families ministry leader for over a year now. She is doing a phenomenal job given she is split between two ministry spaces creating a thriving culture where discipleship and formation lie at its heart. I want to personally thank all the volunteer leaders who give so much of their time, energy and care to our young people. You are an inspiration and are having a significant impact on our youth.

The youth have had such a blast this past year from fun outings like mini golf and trampoline parks, to crazy baking challenges and playing Grog in the church. It has been a joy to see our youth continuing to own their faith more and more. This is evident on our fun Friday nights, in the learning we do together, times in worship and prayer, as well as the practical outworking of faith. An example of this was when our youth cooked a bunch of meals for the Angel food freezer; to bless people in our community who might need it.

Over the past year we have explored topics of who God is, prayer, reading scripture, our role as humans in God's big story, and what it looks like to live wisely. And we have leaned into making prayer a more central part of who we are at St Paul's Youth. Whether this is through time spent in the prayer room, youth regularly praying for one another, or intentionally creating spaces to receive prayer from others.

Last July, we began hosting Testify Dinners. Natalie and Myles have been hosting our senior youth a couple times a term at their house for a meal. This has been such a great opportunity for our older youth to connect in a smaller group outside of the wider youth context.

Another highlight has been our Church and Easter Camps! We had 30 youth participate in Easter Camp who had an amazing time together from hi-vis dance parties to powerful times of worship and prayer. Massive thank you to the team of leaders who went and served our youth so well there!

Our Youth Band space is going from strength to strength – Dave and Zoe are doing an incredible job training and mentoring the young people creating opportunities for ongoing development and using their gifts to contribute to the worshipping life of the church.

We are welcoming Hugo to the Youth team. Having grown up in St Paul's, he is already very familiar with the youth space. He will be assisting Natalie on Friday nights, and we are excited that he is joining us!

Youth continues to experience greater connection and cohesion with the wider faith community at St Paul's via the evening service. You can find our Youth Vision on our website.

We give God thanks and praise for all that he is doing in the lives of our youth and we are excited for the future!

Ngā mihi nui,
Rev Matt Bruns and Natalie Williams-Boag
Associate Priest and Youth & Families Leader



INTERNATIONAL MINISTRY

By the grace of God, our Wednesday Free Student Lunch continues to experience a regular influx of between 100 to 300 students every week. This trend is also reflected in the attendance at the Friday English Class and other ministries hosted by Michael Jenkins which we are very grateful for. Over the past six months, we have also seen an increase in volunteers serving within the Student Lunch ministry, with people joining from both St Paul's and other churches across Auckland. This generosity of time, prayer, and financial support has been essential in sustaining and growing this ministry.

A particular highlight from the past year has been our outreach to the Chinese community. In partnership with Selena, a Chinese Missionary who volunteers at the Student Lunch, and several Chinese churches across the city, we co-hosted our first Chinese Christmas Day Outreach Service. Many Chinese students and families from the Chinese community attended and we saw 15 people respond to the Gospel message, choosing to receive Jesus as Lord and Saviour. This year we hosted a similar event during Chinese New Year Eve with the Gospel theme and five students responded.

Alongside these events, Selena has begun leading a weekly Chinese Bible Study on Saturday afternoons at St Paul's. We now have four Chinese Christian students taking part in a Bible study each Wednesday, with the hope of establishing a sustainable and accessible disciple-making movement among international students. Again, a huge thank you to all of you who say yes to supporting this movement in prayer, financial sponsorship, and personal leadership.

St Paul's partnership with Student Life has resulted in more than 6,000 free coffee cups handed out to university students during this year's orientation weeks. It generated around 3,000 follow-up conversations on spirituality and faith. We are prayerful about this partnership in the hope of bringing about the promise of the Bible that says, "The harvest is plentiful, but the workers are few. Ask the Lord of the harvest, therefore, to send out workers into his harvest field."

Finally, we would like to express our sincere thanks to Michael Jenkins for his faithful leadership across multiple areas of ministry, including Thursday night international worship, Friday English classes, and Saturday keyboard lessons. Thank you Micheal to you and your wider team, including Andy, for providing hospitable spaces for people to come and find community at St. Paul's.

Rev Ian Yong
Associate Priest



MISSION & EVANGELISM

Alpha this year is getting off to a good start, with Alpha being offered free of charge, thanks to a generous member of St Paul's. Having Alpha on a Sunday has an intentionality in cultivating a culture at St Paul's of inviting our non-Christian family and friends to church so they can meet Jesus. This is an accessible 'rite of passage' to discipleship pathway that involves transformation and formation. The goal is to initiate a movement in sharing the Gospel of Jesus in our local community. Our leaders are going through training called the Disciple Making Movement. The purpose is to equip our people to make disciple makers, so that we are multiplying disciples in fulfilling the Great Commission. This is what comes after anyone becomes a disciple or follower of Jesus through Alpha at St Paul's.

For the global mission, NZCMS has successfully hosted an event last year at St Paul's called 'Gather to Scatter' to inspire and to equip Christian leaders who are called or are discerning if they are called to global mission. There were many young adults from different churches and this has initiated a monthly meeting led by Carl Tinnion called 'Seriously Interested in Mission' at St Paul's. This group provides an opportunity and training to further God's call on their lives for global mission. The team is already planning and promoting 2026's Gather to Scatter event again at St Paul's.

St Paul's partnership with NZCMS has started our networking with other missional agencies like WEC, Mission Interlink and Wilberforce Foundation, in the areas of resourcing and equipping churches in both local and overseas mission initiatives. There is an on-going and growing ministry in engaging with other churches locally and nationally who are passionate about local mission, particularly to international and migrant communities, to connect, share and learn from one another. By building relationships with the multicultural community, we reflect the diverse but united Body of Christ.

Four years ago, St Paul's was the first church in New Zealand to take part in the World Vision's Chosen Campaign, where instead of us choosing which child we want to sponsor, the children in the World Vision communities get to choose who they want to sponsor them. We have continued to take part each year and look forward to continuing our relationship with World Vision. Thanks to those from St Paul's who took part in it this year.

Our Prison Ministry Team led by Trevor Starr has been back up and running for this past year. The team head into Mt Eden Prison every second Sunday to lead worship, share the gospel and pray with those in prison. Trevor regularly sends prayer requests through and we pray as a staff team. This is a really exciting initiative and we look forward to hearing more about what God is doing in this area and in people's lives.

Rev Ian Yong
Associate Priest



CREATION CARE KAIHĀPAI

Tēnā koutou e te whānau,

This past year has been one of steady progress and deepening commitment to our calling to care for creation, grounded in the Fifth Mark of Anglican Mission: To strive to safeguard the integrity of creation and sustain and renew the life of the earth.

A significant milestone was completing our transition away from single-use cups. With a new dishwasher and cup library, we've made reusable cups the norm at St Paul's. This required not just infrastructure but a genuine cultural change, and we're grateful to staff and dishwashing teams who've made this sustainable practice possible.

In October, we hosted Andrew Shamy for a talk on Grief and Hope for Creation. The conversation explored how we hold both ecological loss and hope in Christ – helping us articulate what it means to care for creation from faith rather than despair.

We're planning another Lament for Creation service on 7 June, this year broadened to encompass lament for the cosmos and all who inhabit it. The service will again offer a space for communal grief and hope, where we can together bring our concerns to God.

We've progressed on a sustainability strategy for church events. After Hours and other gatherings now incorporate dishwashing teams as standard, reflecting our commitment to care for creation in everyday church life.

As members of Eco Church Aotearoa, we attended the Sustainability Champions Workshop in May and continue to be resourced by their materials. We've developed our Creation Care page on the church website, clarifying our theological framing using the Eco Church outline to articulate why creation care is central to our faith.

Looking Ahead

We're exploring bike parking options and garden spaces as part of the wider masterplan for our church grounds. We envision this green space as a unique haven – moments of sun and beauty along the hustle of a busy street, offering peace to passersby and students. Even small green spaces can be a powerful witnesses to God's abundance in the heart of the city.

We're planning to attend the next Sustainability Champions Workshop, continuing to learn from the wider Eco Church network. Our group gathers in prayer, practicing lectio divina together – listening for God's voice in scripture and creation, keeping our work rooted in spiritual discernment.

We remain hopeful that God is making all things new, and that we're invited to participate in that renewal. Even in small ways, in our corner of the world, we trust that caring for creation is part of our faithful witness to the God who first called the world good.

Ngā mihi nui,
Natalie Keane
on behalf of the Creation Care Kaihāpai

BUILDING & RESTORATION

St Paul's remains a steady presence in the heart of Auckland, bridging our city's history with the life of our community today. It is more than just a heritage building or an architectural treasure; it is a sacred anchor for our wide community. Its presence provides a sense of continuity and peace amidst the rapid pace of urban life, ensuring that our deep red doors remain a welcoming threshold for all who seek something other than the rigours of the daily grind: solace, beauty, peace and a place to encounter our loving Saviour.

The past year has once again shown that St Paul's is a place where we bring our whole selves before our heavenly Father, in joy, in crisis, in heartfelt praise and in quiet reflection. While our old girl continues to require an inordinate amount of upkeep, we have seen time and time again how challenges are met with grace and how unexpected renewal often follows storms (literally and figuratively).

Prayer Room

Within the walls of our Lady Chapel we have set up a contemplative space for prayer and reflection. A sincere thank you to Rachel for her vision, curation and day to day management. If you would like to spend time either independently or with a group, please book in through our website, under the events section.

The Roofing Project

The much referred to roofing project has moved from a distant concern to a more focused mission. After research into slate alternatives with the approval of Heritage New Zealand Pouhere Taonga, we have determined that our ultimate goal is to give this church the crown she deserves: a Welsh slate roof. This is a massive undertaking as the cost of the tiles is only one piece of the puzzle. We must account for extensive scaffolding, the renewal of gutters and downpipes to handle modern rainfall volumes, and the inevitable repairs to the timber and stonework we expect to find beneath the existing decremastic sheets.

When our initial restoration plan was drafted, seismic strengthening whilst undertaking major restoration was a legislative mandate. However, this has recently entered a period of uncertainty as a new Bill progresses through Parliament aiming to remove the more rigid requirements for earthquake-prone buildings. We are awaiting the final government decision and subsequent industry guidance before committing to further structural interventions. This holds significant cost implications.

As part of our due diligence for the roofing project, we are conducting a full investigation of the drains to ensure the integrity of the building. There is after all, little point in a new roof if the drains are blocked.

The current roof is a series of decremastic sheets which is galvanized steel pressed into a tile shape and covered with a bitumen-based coating and finished with a textured, coloured stone chip. A recent Asbestos Management Survey confirmed that the bitumen/glue in the current tiles contain asbestos. While we have been assured by air monitoring that it is currently safe and non-airborne, this adds a layer of complexity and cost to the eventual removal. We have commissioned an asbestos management plan as a result.



However, we serve a God of miracles. We have just had 165m² (16.5%) of Welsh blue slate tiles donated. This incredible gift is a testament to God's ongoing provision. Please continue to pray for this project—for clarity, for the right professional partners, and for a successful fundraising journey.

Flood Restoration and Renewal

On 2nd January, torrential rain caused a failure in the northern internal gutter, sending water cascading through the organ chamber and inundating five levels of the building. Restoration included up to 85 fans and dehumidifiers, daily moisture readings, removal of various ceilings, walls, wallpaper, kickboards, flooring and a complete rewiring for power and installation of new lighting throughout the affected areas. We had just removed the fans and dehumidifiers when another downpour on 14th January reflooded the same area to a lesser degree. Fortunately, the staff team were able to leap into action and mop up as well as bring up the baptismal pool (no mean feat) to collect any further ingress. The following day we went ahead with a planned drone survey of the internal gutter culprit to find a leaf guard had dislodged and was acting as a plug not a filter in the outlet. This has been remedied and on both the northern and southern internal gutters an overflow outlet installed to ensure this is not repeated.

Once again, Romans 8:28 has been our reality. While we could not originally afford the preschool team's request for a freshening up, the insurance funded restoration necessitated an extensive renovation of both the Tiny Stars and Rockets rooms, and the Sparklers room to a lesser extent. They now boast new flooring, carpet angel worthy rugs and funky new colours. Thank you for the donations of so many beautiful children's books to replace those that were destroyed.

The organ was the hardest hit. Surprisingly it still functions to an extent, however approximately half is unplayable. This sounds bad however the damage was not as extensive as feared. It will be fully restored over the next couple of months to make Michael Jenkins a very happy man.

A special thank you to Chris from Limeworks for his constant availability and problem-solving brilliance for all things building related throughout the year.

Ongoing Maintenance and Challenges

We continue to face a puzzling issue with water and sludge entering the basement and garage areas. We are currently head-scratching and assessing the best way to manage and negate this unusual seepage.



St Paul's requires an inordinate amount of upkeep and restoration for day to day functioning. Bruce Kemp, John Hepworth and Craig Haybittle work tirelessly in their roles as contractors to provide required support. Their dedication is the backbone of our facilities management. I sincerely hope that my promise of a gold lined room in heaven will eventuate. In the meantime, we are deeply indebted to their skill and humble service.

Carlton Gore (Vicarage)

The vicarage has continued to be restored with small improvements and brought up to a standard that meets the rigours of a family home. The front porch and deck area and external northern wall have been repainted. Additional curtains will hopefully provide heat insulation for winter months and a ceiling fan in the lounge area will offer relief for those stifling summer days. A new oven was installed as was a new mailbox. On the agenda for the near future is rewiring of the power board as well as a new path for the front of the house.

Dominion Road (Vice Vicarage)

Following the Bruns whānau's move to their own home in January 2025, the Yong family moved into this property. Maintenance has included a new heat pump and the installation of a partition door to improve heating efficiency. We continue annual external drain clearing to prevent any repeat of historical flooding.

Searle Street (Rental)

Significant work was completed between tenancies to maintain a high standard, including a new heat pump, extractor fans, oven, dishwasher, and internal painting.

In all things, we are reminded that while we tend to the stone and timber, it is God who builds the house. Thank you for your patience and your prayers as we steward these properties.

Jennifer Cairns
General Manager



OPERATIONS & HR

It is always a joy to review our year and see the incredible breadth of activities St Paul's has brought to life. This year has been just as dynamic and inspiring as ever. Our Sunday preaching themes included: Who do you say I am; With Jesus for Jesus; Kindling the Flame: Praying for a Holy Awakening; Power of the Spirit; Humble, Hungry, Hopeful, Habits, and Humour; Dear Church: Seven Letters to Seven Churches; Season of Creation; The Unhurried Heart; and our Christmas theme of Unexpected: Not the King we Thought You'd Be. Christmas Day was a change up when we co-hosted a service in Mandarin. Easter was a combination of three events when we celebrated Jesus's death and resurrection. At the start of Lent we enjoyed a shared pancake dinner together. Maundy Thursday was a reflective service when we shared scripture, foot washing, and communion. Good Friday we joined several churches in a walk past churches in central Auckland celebrating the stations of the cross. In celebrating Easter Sunday, we honoured one of the most transformative moments for all of humanity.

Other events throughout the year included three camps with Festival One and a very successful time spent together at Finlay Park for a church gathering. Additionally, Donald Fawcner took a group of parents and their children to 1:1 camp. We also welcomed in 2025 with a church picnic at Long Bay.

Prayer and worship were resounding themes with joining other churches for Open Heaven; Deeper; Pentecost Prayer Initiative – 10 Days of Prayer; staff and others joined the Prayer Breakfast at Eden Park; we hosted three 24/7 Prayer evenings with St Augustine's, the Upper Room and Central Vineyard and welcomed Pete Greig to host one evening.

St Paul's Creation Care Kaihāpai group hosted a Lament for Creation; a reflective service to examine creation and to faithfully respond in prayer, lament and communion. There was also an event to celebrate Creationtide. We have gone old school for our hot drinks on Sundays using reusable mugs and cups. Thanks for your generous donations of cups to make this happen. Our speedy dishwasher in the café area cycles through the mugs well. This is having a huge positive impact on our rubbish quantities and resultant landfill contributions. Showing our planet some love. We have other initiatives planned.

Women of St Paul's were invited to a shared dinner called Desert Bloom. Sally Shanks also held several prayer and prophetic meetings throughout the year for women.

Missionally we continued our relationship with World Vision and sponsoring a community in Lalogo-Lakwana; Rev Matt Bruns participated in the Lifewise Big Sleepout to raise awareness of and funds for rough sleeping and homelessness; and you were all so generous giving warm clothing and blankets to the Whakamahana tō Kāinga Winter Appeal; we finished the year with a Christmas appeal to support the Auckland City Mission's critical work in Auckland.



Educationally we held several workshops including Dr Sam Wells talking about the ethics of AI; Why Art Matters; How to flourish in an online world; and an NZCMS day: Gather to Scatter.

Our well-loved regular events continued with The River; Love your Church day aka Working Bee; several Hello Brunches to welcome newcomers to our community; monthly After Hours meals after the evening service; infant dedications and baptisms and adult baptisms; Youth group met every Friday night; Youth Band gave it their all for several services; our annual Quiz night to raise funds for the Youth to attend camps was as much fun as ever; Jacquie Landeman ran a CAP money course to assist people with finance management; our AGM celebrated the previous year's events and voted for our Vestry members; the Families team held yet another fantastic Carnival with a Mario theme. Our community continued to freeze meals for Angelfood to give to others when they are facing challenges. This is love on a plate as I am sure you can all testify to, so thank you to everyone who contributes.

A group including Ian and Daisy Yong attended Waitangi with Karuwā Trust to engage more with our bicultural story and to serve on the marae.

It is tempting to view the long list above as routine however it is important to pause to honour them as essential bridges that connect our community. The success of these moments isn't just in the event itself, it's in the tireless preparation, the warm hospitality, and the quiet planning and effort that happens long before the doors open. Our volunteers are the heartbeat of this work. To those of you who provide the energy, grit, and dedication to keep us moving: thank you. Our 'waka' thrives because of you. If you're looking for a way to contribute and find your place in the crew, we would love to have you on board.

One much prayed for change was the merging of the 3pm and 6.30pm services. We took all the best elements of both services, to form a new service of community, fellowship, teaching, communion, and worship. This has been a positive move with evening service numbers increasing with the new rhythm being fully embraced.

We now have a team of Bell Ringers to announce the morning services each Sunday. If you are interested in joining, please let me know.



We continue to fine-tune our partnerships with suppliers to keep our operations lean and effective. We never stop asking how we can do things better or more simply. Central to this is our commitment to knowing the people behind the services we use. We strive to build relationships where every interaction is a positive one, ensuring that our suppliers notice a distinct, welcoming difference when working with us compared to anyone else.

Our gorgeous building serves as a wonderful venue to hire for a few local organisations, helping us raise essential funds. Though the schedule naturally has its ebbs and flows, we are pleased to see it growing into a good source of additional income. Additionally, we lease 10 carpark spaces behind the church to Princeton on an ongoing basis.

We invited all fellow Brother building tenants to a pre-Christmas morning tea with mimosas and then sang a couple of carols together. It made me realise how counter cultural our lives as Christians are when someone commented that the last time she had sung a carol was at school years prior.

Health and Safety continue to underpin everything we do and is tracked with incident forms, vestry reports, Diocese support, police checks and regular conversations. We are pleased that we opted for security for our evening services as they have proved invaluable on a number of occasions. Part and parcel of being an inner city church in these times.

Staff Team

Our office based staff team of 7.2 FTE is small but mighty. Add to that our extremely dedicated Sunday team who work between 4-12 hours each per week and our FTE is 8.05.

Led by Vicar Pete Watson, alongside Matt Bruns and Ian Yong, our clergy team continues to uphold the highest standards of leading, pastoral care and teaching. Their infectious blend of hard work and humour makes them a joy to work with and a vital heart for our staff community.

To support our team we rely on Anjali, Craig, Lauren and Liz as contractors.

Working with Anjali Kemp, our contract Communications Lead, is a breath of fresh air. She balances creativity with a no-nonsense efficiency that keeps us all moving forward. Whether she's tackling a tough project or making us laugh with her witty email sign-offs, Anjali proves that nothing is too hard to handle. We're incredibly lucky to have her 'walking the talk' as a hardworking contractor and a tireless volunteer.

Lauren Aitken now lives and works in London however has continued in her role with Governance support for vestry. Her knowledge from holding this role when working full time on staff is invaluable and it means we still get to regularly connect!



Craig Haybittle works with all things facilities. He mows, hangs, tidies, repairs, sands, paints, gardens – the list is endless. Thank you, Craig, for doing everything that you do. St Paul's looks and functions so much better as a result of your hard work.

Liz de Marigny did an outstanding job volunteering managing Connections, Small Group Admin and the Sunday Volunteer Teams. We didn't want her to get away so were delighted when she came aboard on a contract basis. We love having her on the team. She manages complex tasks with remarkable skill and efficiency, and we are beyond grateful for her contributions. Thank you.

Our Families and Youth teams continue to combine a sense of fun with a strong work ethic. Thanks to their dedication, the younger generation at St Paul's is discovering faith through creative and exciting programs.

In her year as Events Coordinator, Rachel Mawdsley has proven to be both a creative force and a model of efficiency. She seamlessly manages the end-to-end delivery of all our events, from initial curation to final execution. Rachel's talent for organising complex details and her joyful presence make her a vital member of our team.

I want to acknowledge Shelley Patrick (Team Administrator) and Jodelle Bridgman (Finance Manager) as the engines behind our team's success. Your ability to consistently 'make things happen' through efficiency, knowledge and a commitment to excellence is remarkable. Above all, the genuine care you show for your colleagues and your dedication to our collective goals is what makes you both so vital to our staff whānau.

We were delighted to mark ten years of service for Chris Cope and Jodelle Bridgman. Chris and Jodelle possess an extraordinary depth of knowledge regarding their respective areas of St Paul's, and our community is significantly better off for their enduring commitment and expertise.

Looking back on 2025, the strength of St Paul's lies in the seamless integration of our operational foundations and the vibrant life of our community. From the strategic merging of our 3pm and evening services to our renewed commitment to creation care, every administrative decision has been made with the goal of fostering deeper connection and spiritual growth. As we move into the coming year, we do so with a lean, effective team and humble gratitude for the volunteers (you) and staff who make the St Paul's waka move. I look forward to another year of serving our city and our whānau with excellence and creativity under the care of our almighty Saviour.

Jennifer Cairns
General Manager



TREASURER'S REPORT

We are pleased to present the 2025 financial statements, which were approved by Vestry on the 19th February 2026 and adopted at the SGM on the 22nd of March 2026.

While these financial statements are not technically 'audited', the church financials are reviewed by external auditors as part of the consolidated audit of financial statements at a Diocese level. We are also presenting a summary of the 2026 Budget, which was approved by Vestry on 11th December 2025 and adopted at the SGM. This report provides insight into these already approved and adopted financial reports.

2024 Actuals	Revenue	2025 Actuals	2026 Budget
1,281,090	Donations & Fundraising	1,145,343	1,162,000
28,750	Grants & Bequests	43,929	25,000
232,276	Other Revenue	189,745	206,770
1,542,116	Total Revenue	1,379,017	1,393,770

2025 Current Year Revenue: The table above shows an overall decrease in revenue from 2024 to 2025 of \$163,099 (11%). This is mainly due to the decrease in Donations & Fundraising of \$135,747 (11%) and a decrease in Other Revenue of \$42,531 (18%). The decrease in Other Revenue relates to a decrease in 2024 flood damage insurance payouts of \$31,512, a decrease in church hire income \$10,065, CREATIONTIDE stained glass window fundraising \$8,120 in 2024 offset by church camp income \$14,314.

Offsetting this was an increase in Grant income of \$15,179 (53%). Grant income in 2024 related to clergy remuneration reimbursement from NZCMS and the G C Nicholson Charitable Trust. In 2025, grant income was from NZCMS & G C Nicholson Charitable Trust and also insurance related Diocesan subsidies.

2026 Budget Revenue: In 2026, we are expecting donations & fundraising to be \$16,657 (1%) more than 2025. Grants & Bequests are expected to be \$25,000, as we will continue to receive the clergy remuneration reimbursement from NZCMS and the G C Nicholson Charitable Trust but at \$10k less than 2025. Other revenue is expected to increase by \$17,025 (9%) mainly due to church camp income and rental property income increases. Overall, this represents an increase in total revenue of \$14,753 (1%).

2024 Actuals	Expenditure	2025 Actuals	2026 Budget
876,068	Staff, Stipend & Ministry	827,939	856,670
504,591	Operating & Property	479,456	483,037
88,687	Depreciation	84,857	85,000
65,784	Other	49,546	50,335
1,535,130	Total Expenditure	1,441,798	1,475,042
6,986	Surplus/(Deficit)	(62,781)	(81,272)
95,673	Surplus/(Deficit) excl deprn	22,076	3,728

2025 Current Year Expenditure: Looking at expenditure in the table above, we can see an overall significant decrease in expenditure from 2024 to 2025 of \$93,332 (6%). This mainly relates to a decrease in Staff, Stipend and Ministry Costs of \$48,129 (5%) due to staff restructuring midway through 2024, further staffing changes in 2025, the discontinuation of the 3pm service and Feed My Lambs programme. Operating & Property costs have also declined by \$25,135 (5%) due to the decline in office lease and opex costs \$41,284 and Church R&M \$27,664.

This is offset by increases in Church Camp (including Festival One) \$22,615, Events \$7,305 and IT \$7,555. Other expenditure has also declined by \$16,238 (25%) mainly due to declines in Diocesan quota \$6,835, Church Appeals \$6,410 and interest expense \$2,577.

2026 Budget Expenditure: 2026 budgeted expenditure shows an increase of \$33,244 (2%). This relates mainly to an increase in Staff, Stipend & Ministry costs of \$28,731 particularly in the ministry of Kids Church \$6,754, Worship \$7,572, Youth \$5,866 and Pastoral Care \$4,487.

Matt Wong
Treasurer





**Minutes of the Annual
General Meeting of St Paul's
Anglican Church**

20 May 2025

Rev Pete Watson welcomed everyone to the Annual General Meeting of St Paul's Church at 7.15pm. Pete led the congregation in prayer, followed by a time of worship led by Chris Cope.

This past year we have been on a journey of reshaping our vision and our church values which is encapsulated in this phase, 'With Jesus. For Jesus'. As a church we love to worship and pray with Jesus. We look to follow the way of Jesus and we long to see lives and communities transformed for Jesus. Behind all of these things are the five values of being humble, hungry, hopeful, having good habits and humour. As a three Te Kanga church and having this relationship and history in the city, what does all of this mean with a bicultural lense and what would a dynamic equivalent look like.

GUEST SPEAKER

A Te Reo lens for our St Paul's vision: Te Karere

*Whaia nga tapuwae o Ihu Karaiti, o te puna wai ora
Follow the way of Jesus, the source of living water*

This journey has been a shared process and we have looked at Jesus being the centre and different Te Reo words and phrases that encapsulate this idea but from different angles. The idea as a group of people, the wider city but particularly this community was gathering around Jesus. But it never sat right. So we approached this from a different direction. The first idea was around footprints and the impressions that Jesus leaves for us but also this pathway we are called to follow. Then there was the idea if this living water, this thing that quenches an unquenchable thirst.

I hope this name, this vision and identity is a part of your journey and is not about dropping one and picking up another, its around that ongoing infusion and that you get to be the most beautiful version of your history and create a new future.

A full document about the Te Reo lens for our vision can be found on our website.

APOLOGIES

- John Carr
- Ian and Daisy Yong
- Myles Boag
- Ange Watson
- Rachel Bruns
- Hanna Cope
- Karen Lochlan
- Paul and Mel Woodfield
- Bev and Jack Bray

Resolution: The AGM accepts the apologies

Proposed: Pete Watson

Resolution carried

APPROVAL OF MINUTES OF OUR LAST AGM ON 21 May 2024

Resolution: The AGM accepts the minutes of the last AGM as read

Proposed: Pete Watson

Resolution carried

APPROVAL OF ADVANCE INFORMATION PACK

Resolution: The AGM accepts the advance information pack as read

Proposed: Pete Watson

Resolution carried

RECEIVE PARISH ROLL

The Parish Roll is a living document, consisting of people who are actively involved in the life and ministry of the church in the preceding six months. There are 690 people currently on the Roll.

Resolution: The AGM receives the Parish Roll.

Proposed: Pete Watson

Resolution carried

VESTRY'S POWER TO FILL CASUAL VANCANCIES

The AGM need to give Vestry the power to bring replacements onto Vestry if vestry members need to resign during the year.

Resolution: The AGM give Vestry the power to fill casual vacancies

Proposed: David Eaton

Seconded: Linda Bowman

Resolution carried

ST PAUL'S CLERGY SERVING ON VESTRY

The AGM need to also to vote to make our licensed clergy voting members of Vestry. The Vicar is automatically on Vestry, but other clergy don't automatically become voting members.

Resolution: That the Reverends Matthew Bruns and Ian Yong as ordained ministers licensed to St Paul's may be voting members of Vestry, provided that they meet all other requirements under the relevant Diocesan Ministry Statutes

Proposed: Melody Cooper

Seconded: Dave Donaldson

Resolution carried

MEMBERS ON VESTRY

The composition of Vestry is as follows:

Voting Members: Vicar, Other Clergy, People's Warden & Vicar's Warden, 2 Synod Reps (which we elect once every 3 years) and Vestry (3-15 elected members)

Non-Voting Members: Treasurer, Secretary

Matt Wong as Treasurer does not automatically have voting rights on vestry. The AGM needs to vote to make him a voting member of vestry.

Resolution: That the Treasurer, Matt Wong, may be a voting member of vestry

Proposed: Bridget O'Malley

Seconded: Donald Fawkner

Resolution carried.

For the 2025/26 Vestry, there are six candidates. The current Vestry has recommended the number remain fixed at six. The meeting can decide to fix the number at six, as there are six candidates, or a smaller number can be decided on.

Resolution: The number of Elected Members on Vestry is fixed for the 2024/25 year at six.

Proposed: James Bowman

Seconded: Sally Shanks

Resolution carried.

VICAR'S WARDEN

David Eaton has decided to step back from his role as Vicar's warden this year but to remain on Vestry as an elected member. Pete thanked David for his service in this role and his continued service.

Dave Donaldson has been on Vestry for the last 3 years and has agreed to serve this year as Vicar's Warden. The Vicar's Warden is not voted on by the congregation but is appointed by the Vicar.

ELECTION OF VESTRY & PEOPLE'S WARDEN

Pete explained the voting procedure, and the meeting paused to allow people to vote.

Scrutineers: Jodelle Bridgeman, Shelley Patrick, Natalie Williams Boag, Milly Darragh

THANK YOU'S

Pete thanked Trevor Star, David Howe and Tim Harper, who are stepping down from vestry this year. They have all served for several years and contributed greatly to the life and the governance of St Paul's.

Pete also thanked several volunteers who have gone above and beyond in the past year in serving the church community.

Pete thanked the staff team and the wonderful work they do, so much of it unseen.

TREASURER'S FINANCIAL REPORT

Matt Wong

Tonight, I will give a quick review of the last financial year to December 2024 and then provide some detail on the budget and activity to date for 2025.

Firstly, I'm pleased and thankful to note that financially 2024 was a much-improved year for the church compared to 2023. There are two main reasons for this; Increased giving and we have reduced costs last year in line with the FY24 budget, which included a reduction in staff numbers and a move to smaller office space.

2024 Commentary

Starting with Revenue, there was an overall increase in Donations & Fundraising of \$70k, due primarily to the exceptional March 2024 giving season. Grant income has fallen, as there were 2 property grants in FY23 from Hapitia trust and Auckland Council Historic Heritage, which were not available in FY24. There was also an increase in other revenue, mainly due to flood damage insurance payouts, increased church hire income and CREATIONTIDE stained glass window fundraising. Overall, total revenue was \$1.542m, an increase of \$77k from the prior year.

Last year, the church put cost saving measures into place, led by savings of \$127k in Staff, Stipend & Ministry costs. We also see that Operating & Property costs have declined by \$23k, mainly due to the church office move to the smaller space in the Brother building. This savings was a great result, considering we also had to pay out for flood related repairs & maintenance to the church. Overall, total expenditure was \$1.535m, a decrease of \$171k from the prior year.

Other Comments

Surplus excluding Depreciation was \$95k. This was an excellent result, but I note that this surplus does not imply we now have an extra \$95k in the bank accounts. Approximately \$37k was used to pay prior year insurance costs (these escalated significantly in 2023) and approximately \$34k to repay a portion of the \$100k overdraft position from the start of the year. Net bank balance was \$3k as of December 2024.

2025 BUDGET

Vestry has taken a conservative approach again to income and expenditure. We are expecting a decrease in donations and fundraising, noting that March 2024 giving was an exception. Grants will stay constant as we receive clergy cost reimbursement from NZCMS. Other revenue declines, as we are not including an insurance payout of \$40k or Creationtide fundraising. Expenditure should also be lower as we experience a full year's savings from being in the smaller office space, and hopefully a return to more moderate levels of repairs and maintenance. Other expenditure also decreases mainly due to no further office relocation costs. The net result is therefore a \$52k deficit, or \$30k surplus excluding depreciation.

So where are we now? Looking at actual offerings vs budgeted offerings for FY2024, we can see last year's actuals exceeded budget, which is fantastic. Looking at the numbers for FY2025 to date, and these are updated to March 2025, the planned March giving season was more modest, but we did achieve the budgeted amount, and this gives us comfort that we have planned realistically and can support the work we plan to do this year. Our April numbers are also in line with budget, so that is encouraging.

In closing, I would like to thank everyone who supports the church and its ministries financially in the ways they are able, in these uncertain economic times. Thank you!

WARDENS & VESTRY REPORT

Elizabeth Vink and Dave Donaldson

Good evening St Paul's family. AGMs are always such a highlight - a time to pause and reflect on all that God has done in and through the church in the past year. As Wardens and as a Vestry we would like to acknowledge His presence and faithfulness which are so evident year upon year.

In the last couple of years, we have seen a lot of change but now feel confident that we are entering a period of establishment, and one of growth.

We have so much to celebrate. From Chinese Alpha and St Paul's Kids & youth to families events, small groups, Feed my Lamb donations, church and Easter camps, 24-7 prayer gathering partnering with other churches - there is so much to give thanks for! Women's events, short courses, Deeper nights, new songs, development of the pastoral care team, Creation, the River, barn dance, youth band, creation care Kaihāpai, Christmas and nativity services, Unify, student ministry (weekly lunches for 300 students), after hours, church lunches and more - all beautiful expressions of our church in action. An image we've spoken about the last few years has been of the church as a waka (rather than a cruise ship) and everyone taking up their paddle. All these expressions of our church community couldn't have happened without you, as the church, picking up your paddle and playing your part. months where we rely mainly on our regular givers.

As you know, in the Anglican tradition the Vestry, performs a governance function for St Pauls. All members of Vestry, in addition to attending 6-weekly meetings, will sit on at least 1 sub-committee. As of today, we have sub-committees focused on Mission, Finance, Repairs & Maintenance, Bi-culturalism, Human Resources, Health and Safety, Care for Creation, St Paul's Music as well as a regular report from your Synod reps David and Paul. In addition, your Wardens meet with the Clergy team once a month for a general update on matters of importance.

We would like to thank this year's Vestry; Melody Cooper, Tim Harper, Donald Fawkner, Matt Wong (Treasurer), Bridget O'Malley, Trevor Starr, Dave Donaldson, David Howe, and Paul Woodfield, ably assisted by Lauren Aitken (Secretary) – even when 20,000kms away in England! We would like to thank them for their service to our community and those that are standing again, along with a special thanks to Trevor, David and Tim who are leaving us after serving our community on Vestry so well for many years.

We as Wardens, along with the Vestry, are deeply aware that so much of what happens at St Paul's is made possible by our incredible clergy and staff team. This past year has been a season of regrouping and transition for the staff. Around this time last year, Matt was on his sabbatical and Pete was a few months into his role as Vicar. We were also navigating the challenge of working through a restructure of our staff team from 12 FTE to 8. We had to farewell dearly loved people from our team and for a few others, hours of work were reduced. Staff needed to view everything with fresh eyes to see what our core St Paul's areas of focus are and make adjustments to find a sustainable rhythm. We moved offices (no small feat) and later in the year, we also farewelled Nathan who had contributed significantly to the 3pm service as well as the governance and leadership of the church. Thank you to all the staff and clergy team for your incredible hearts of service to God and this community. Thank you for navigating the changes so graciously. Each of you bring so much to your roles and we pray you continue to flourish, feeling the Holy Spirit breathing new life into you. We are grateful for Pete's leadership and all he is bringing to St Paul's as he helps guide our waka on this journey.

As we look to the year ahead, there is a sense of being on the cusp of God doing even deeper and powerful work in and through us a church. At our camp, Nigel Dixon challenged us to not to rush into being filled but taking time to be formed first. Pete Greig at our combined prayer event, shared the image of paddling towards the waves. We see a strengthening call to prayer within this church and across others. We have our renewed vision of With Jesus, For Jesus. One of loving to worship and pray with Jesus, following the way of Jesus and seeing lives and communities transformed for Jesus.

As we stated last year, this is a new season and also a time of challenge and renewal for all of us. What does this new season require of us? There is a need and call for each member in the church to use their God-given talents, to pick up their paddle - to function fully as the body of Christ. So let's make sure we take those moments to be still and know that He is God, to draw close to Him, to hear His voice and to follow where He is calling each one of us. As it says in Colossians: "Let your roots grow down into him, and let your lives be built on him. Then your faith will grow strong in the truth you were taught, and you will overflow with thankfulness."

Amine.

ELECTION RESULTS

The election results were announced. All members of Vestry and the People's Warden received the majority of the votes, so all have been elected.

The meeting received the names of the vestry as written, and the name of the People's Warden.

People's Warden:

Elizabeth Vink

Vestry:

Bridget O'Malley, David Eaton, Mel Cooper, Donald Fawkner, Natalie Keane, Monica Ayers

Resolution: The meeting receives the elected members of Vestry and the People's Warden.

Proposed: Pete Watson

Resolution carried

OTHER BUSINESS

No items for other business were submitted

CLOSING PRAYER & WORSHIP

Chris Cope & Rev Pete Watson closed the meeting in prayer and worship at 8.34pm.



**Anglican Diocese of
Auckland**

**St Paul's Symonds Street
Anglican Church Financial
Statements**

**Year ended 31 December
2025**

Anglican Diocese of Auckland
St Paul's Symonds Street Anglican Church
Financial Statements
For the year ended 31 December 2025

Anglican Diocese of Auckland

St Paul's Symonds Street Anglican Church

Statement of Comprehensive Revenue and Expenses

For the year ended 31 December 2025

	2025	2024	2026 BUD
Revenue			
Donations & Fundraising	1,145,343	1,281,090	1,162,000
Grants & Bequests	43,929	28,750	25,000
Rental & Hall Hire	96,882	102,350	103,838
Interest & Dividends	50,519	52,626	50,460
Other Income	42,344	77,300	52,472
Total Revenue	1,379,017	1,542,116	1,393,770
Expenditure			
Staff Costs	555,541	600,584	552,744
Stipends & Ministry Costs	272,398	275,484	303,926
Operating Costs	183,904	166,443	201,485
Property Costs	295,552	338,148	281,552
Depreciation	84,857	88,687	85,000
Diocesan Quota & Levies	24,932	31,767	30,755
Missions & Giving	10,193	17,019	6,620
Interest Costs	14,420	16,998	12,960
Total Expenditure	1,441,798	1,535,130	1,475,042
Operating Surplus/(Deficit) for the year	(62,781)	6,986	(81,272)
Realised Capital Gain on Sale of Property and Investments	-	-	-
Net Surplus/(Deficit) for the year	(62,781)	6,986	(81,272)
Gain/(Loss) on Revaluation of Investments	-	-	-
Total Comprehensive Revenue and Expense for the year	(62,781)	6,986	(81,272)

This statement is to be read in conjunction with the notes to the financial statements.

Anglican Diocese of Auckland
 St Paul's Symonds Street Anglican Church
 Statement of Financial Position
 As at 31 December 2025

	2025	2024
Assets		
Current Assets		
Cash and Cash Equivalents	33,394	69,750
Accounts Receivable	829	464
GST	13,354	6,866
Prepayments	28,326	8,899
Sundry Debtors	668	122
Trust Investments	83,448	81,024
Total Current Assets	160,019	167,124
Fixed Assets		
Investment Property	2,445,366	2,474,730
Land & Buildings	9,051,961	9,053,915
Other Fixed Assets	10,446	29,134
Total Fixed Assets	\$11,507,773	\$11,557,778
Total Assets	\$11,667,792	\$11,724,902
Liabilities		
Current Liabilities		
Bank Overdraft	44,370	66,749
Accounts Payable	38,496	14,565
Employment Entitlements	41,846	31,491
Sundry Creditors and Accruals	22,303	23,230
Total Current Liabilities	\$147,015	\$136,035
Non-Current Liabilities		
Fixed Rent Review Accrual	-	-
Lease Rent Free Accrual	-	-
Mortgage on Clergy Housing	184,113	189,422
Total Non-Current Liabilities	\$184,113	\$189,422
Total Liabilities	\$331,128	\$325,457
Net Assets	\$11,336,664	\$11,399,445
Equity		
Current Year Earnings	(62,781)	6,986
Retained Earnings	8,399,094	8,392,109
Revaluation Reserve	3,000,351	3,000,351
Total Equity	\$11,336,664	\$11,399,445

This statement is to be read in conjunction with the notes to the financial statements.

These financial statements were approved by the Vestry of St Paul's Symonds Street Anglican Church on 19th February 2026.

Treasurer

Warden

St Paul's Symonds Street Anglican Church

Statement of Accounting Policies

For the year ended 31 December 2025

General Accounting Policies

The following general accounting policies have been applied in the preparation of this financial report for St Paul's Symonds Street Anglican Church (St Paul's).

1. Statement of Compliance

The financial statements of St Paul's are prepared in accordance with Generally Accepted Accounting Practice in New Zealand (NZ GAAP).

The financial statements have been prepared in accordance with Public Benefit Entity (PBE) Accounting Standards Not-For-Profit Tier 2 with Reduced Disclosure Regime (RDR) concessions. The criteria under which St Paul's is eligible to report in accordance with PBE Standards RDR are:

- St Paul's has no public accountability
- St Paul's is not defined as large (expenses less than \$30m)

2. Measurement Base

The basis of measurement and reporting of financial performance and financial position of St Paul's is on a historical cost basis with the exception that certain investments are stated at market value.

Specific Accounting Policies

3. Financial Assets

Financial Assets are classified as either "financial assets at fair value through profit and loss" or "loans and receivables". The classification depends on the nature and purpose of the financial asset and is determined at the time of initial recognition.

Financial assets are classified as "financial assets at fair value through profit and loss", where the financial asset is either held for trading or it is designated as at fair value through profit and loss.

a. Investments

St Paul's investments - labelled "trust investments" - have been categorised as available-for-sale financial assets. When a financial asset is recognised initially, St Paul's measures it at its fair value plus transaction costs that are directly attributable to the acquisition or issue of the financial asset.

Subsequent to initial recognition, investments are recognised and derecognised on trade date where purchase or sale of an investment is under a contract whose terms require delivery of the investment within the timeframe established by the market. Assets available-for-sale are stated at fair value. Gains and losses arising from changes in fair value are recognised in Other Comprehensive Revenue and Expenses for the year except for impairment losses and foreign exchange gains and losses, until the financial asset is derecognised, at which time the cumulative gain or loss previously recognised in other comprehensive revenue and expense shall be recognised in surplus or deficit.

b. Loans and Receivables

Loans and receivables shall be recorded at amortised cost less impairment (bad and doubtful debts).

St Paul's Symonds Street Anglican Church
Statement of Accounting Policies (continued)
For the year ended 31 December 2025

4. Financial Liabilities

Trade payables and other accounts payable - labelled "accounts payable" and "sundry creditors and accruals" - are recognised when St Paul's becomes obliged to make future payments resulting from the purchase of goods and services. Trade payables and other payments are recognised at amortised cost.

5. Investment Property

PBE IPSAS 16 (NFP) Investment Property Standard has been applied by St Paul's in the preparation and presentation of its financial statements.

Investment property is property (land or a building - or part of a building - or both) held to earn rentals or for capital appreciation, or both, rather than for:

- a. Use in the production or supply of goods or services, or for administrative purposes; or
- b. Sale in the ordinary course of operations.

After initial recognition, St Paul's shall choose as its accounting policy the cost model and shall apply that policy to all of its investment properties therefore account for its investment properties in accordance with PBE IPSAS 17, Property Plant and Equipment.

Investment properties shall be derecognised when they have either been disposed of or when the investment property is permanently withdrawn from use and no future benefit is expected from its disposal.

Any gains or losses on derecognising an investment property shall be included in the consolidated surplus of St Paul's in the year in which they arise.

In order to avoid any doubt, St Paul's shall comply with the requirements of PBE IPSAS 16 Investment Property and PBE IPSAS 17 Property Plant and Equipment.

6. Fixed Assets

Land & buildings and all other property, plant and equipment - labelled "other fixed assets" - are stated at cost, less accumulated depreciation and any impairment losses. The cost of property, plant and equipment is the purchase cost, together with any incidental costs of acquisition.

Where an asset is acquired through a non-exchange transaction, its cost shall be measured at its fair value as at the date of acquisition.

Depreciation is calculated to write down the cost of property, plant and equipment, less any assigned residual value, on a straight-line basis over the expected useful economic lives of the assets concerned.

Leasehold improvements are depreciated at the lesser of the period of the lease or 20%. Freehold land is not depreciated.

St Paul's Symonds Street Anglican Church

Statement of Accounting Policies (continued)

For the year ended 31 December 2025

The depreciation rates used are based on the estimated useful lives of the assets, are as follows:

Buildings - 2% on cost
Leasehold Improvement - lesser of the period of lease or 20% on cost
Motor Vehicles - 20% on cost
Furniture & Equipment - 20% to 36% on cost
Computer - 25% on cost

The assets' residual values and useful lives are reviewed, and adjusted as appropriate, at each reporting date.

Property, plant and equipment is reviewed for impairment whenever events or changes in circumstances indicate that the carrying amount may not be recoverable. An impairment loss is recognised for the amount by which the asset's carrying amount exceeds its recoverable amount.

7. Functional Currency

The functional currency of St Paul's is New Zealand Dollars being deemed the currency of the primary economic environment in which St Paul's operates.

8. Goods and Services Tax (GST)

All items in the Balance Sheet shall be stated exclusive of GST, with the exception of receivables and payables, which include GST.

All items in the Income Statement shall be stated exclusive of GST.

Non-recoverable GST shall be reported as an operating expense.

9. Cash and Cash Equivalents

Cash equivalents are short-term, highly liquid investments that are readily convertible to known amounts of cash and which are subject to an insignificant risk of changes in value.

10. Revenue Recognition

Revenue is recognised and measured at the fair value of the consideration received or receivable to the extent it is probable that the future economic benefits or service potential associated with the asset will flow to St Paul's and the fair value of the asset can be reliably measured.

a. Non-exchange transactions:

(In a non-exchange transaction, an entity either receives value from another entity without directly giving approximately equal value in exchange or gives value to another entity without directly receiving approximately equal value in exchange.)

An inflow of resources from a non-exchange transaction recognised as an asset shall be recognised as revenue, except to the extent that a liability is also recognised in respect of the same inflow. As St Paul's satisfies a present obligation recognised as a liability in respect of an inflow of resources from a non-exchange transaction recognised as an asset, it shall reduce the carrying amount of the liability recognised and recognise an amount of revenue equal to that reduction.

St Paul's Symonds Street Anglican Church
Statement of Accounting Policies (continued)
For the year ended 31 December 2025

b. Interest income:

Interest income is recognised as it accrues, using the effective interest method.

c. Distribution income:

Distribution's income is recognised on the date that St Paul's right to receive payment is established.

d. Grant and donation income:

Grant and donations income is recognised as income when it becomes receivable unless St Paul's has a liability to repay the grant if the requirements of the grant or donation are not fulfilled. A liability is recognised to the extent that such conditions are unfulfilled at the end of the reporting period.

e. Bequests and Estates income:

Bequests/Estates are recognised in the statement of financial performance when probate of the will has been granted, receipt of the bequest is probable, and the amount of the bequest can be measured reliably. Where bequests are provided for the purpose of setting up a specific Trust fund the income is recognised as equity of that fund.

When St Paul's acts as in the capacity of an agent rather than the principal in the transaction, the revenue and expenses are recognised as the net amount rather than separate income and expenses.

f. Goods received in-kind:

St Paul's has elected not to recognise goods in-kind that meet the definition of inventories in PBE IPSAS 12 Inventories, if it is not practicable to measure reliably the fair value of those goods at the date of acquisition because the costs of recognising the goods at the date of acquisition outweigh the benefits. In the case where goods in-kind are sold, St Paul's recognises revenue when they are sold. In the case where such goods in-kind are distributed free of charge, the entity does not recognise revenue.

11. Income tax

St Paul's is a ministry unit of a registered charitable entity with the DIA Charities (Registration No: CC31 449). As such, St Paul's is exempt from income tax.