

2025

IMPACT REPORT



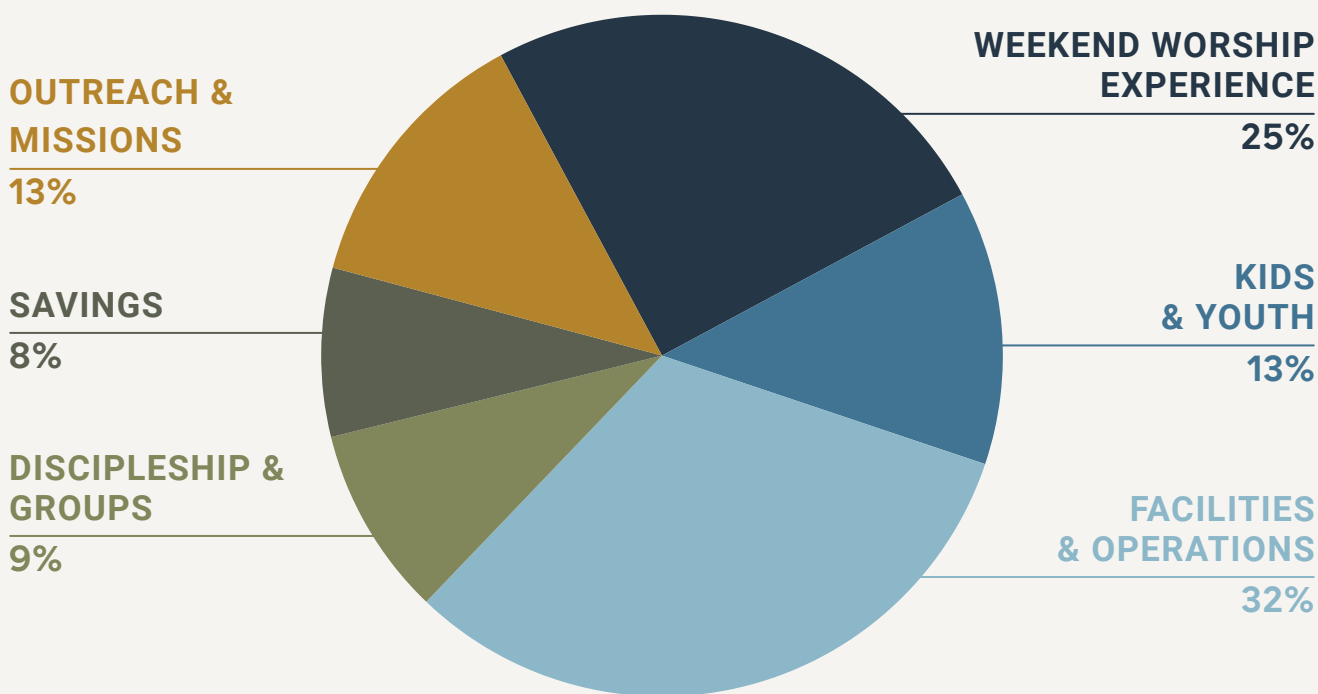
Your generosity leads to life change.

In 2025, your faithful giving created opportunities for Eagle Christian Church to reach, teach, equip and send in our Treasure Valley community and beyond.



Breaking down every dollar.

Collectively, each dollar given to support the mission and ministries of ECC in 2025 was deployed in the following ways:



Scroll through the rest of this report to see how those dollars were used →

Weekend worship experience

The team and resources that make up our Saturday and Sunday services at each of the four ECC campuses—from every visitor's first impression to the last worship song.

4,353

Average weekly attendance

Including kids, youth and adults at Central Valley, Surprise Valley, West Valley and Kuna.

1,130

Average online attendance

Average monthly volunteers

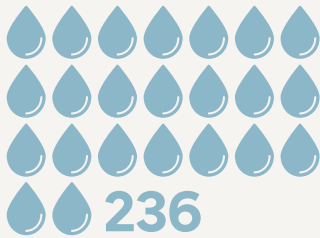
The volunteers whose service make our ministries possible.

3,057

First-time visitor records

Includes anyone who checked in or filled out a connection card at any campus in 2025.

10,237

Unique attendees

Baptisms across campuses

Including kids, youth and adults.



120

New ECC memberships

238,072

The cumulative number of people who walked through the door for a weekend service at any campus

123,280

 Total number of online media streams in 2025

Kids & youth

Our kid's ministry is on a mission to shape kids who love God, love His Word and love sharing Him with others as they walk in Jesus' footsteps.

ECC's youth ministry is passionate about connecting our students with Jesus in a life changing way.



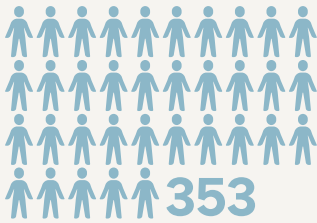
Average kids weekly attendance

1,158

Summer VBS attendance

Kids who attended our Magnified VBS across all four campuses.

584 VBS volunteers across campuses



Kids ministry volunteers

Number of volunteers who actively served across campuses in 2025.



Average youth weekly attendance

80 MIX camp attendance

Summer camp for middle school.

96 MOVE camp attendance

Summer camp for high school.



Winter Camp attendance

ECC's annual Winter Camp for 6th grade +.



Facilities & operations

The day-to-day running of our campuses, including upkeep and care for facilities and special projects to expand and improve. In 2025 we completed upgrades at every campus.



Surprise Valley Lobby Remodel

Expanded and updated the lobby space to better accommodate the Coffee Shop and Connection Center.



West Valley Worship Upgrades

Upgraded the sound system in the Worship Center to provide a better weekend worship experience.



Kuna Worship Upgrades

Upgraded the sound system in the Worship Center to provide a better weekend worship experience.



Central Valley Chapel Remodel

Updated the Chapel with fresh paint, carpet and sound.

Worship Upgrades
Upgraded the lighting and sound in the Worship Center.

Discipleship & groups

Our adult discipleship programs teach and equip through classes and groups.

2,118

Individuals who participated

Adults who attended a class or participated in a small group through any campus in 2025.

190

Groups across campuses

From support groups like GriefShare to special interest groups like Women's Fitness.



Scan to check out all the opportunities to get involved with groups.

Savings

We operate debt free but set aside money each month for future expansion.

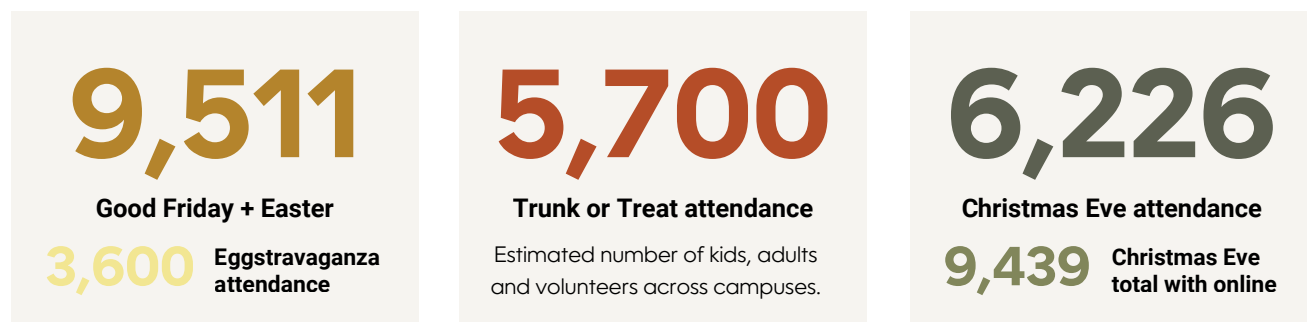
Outreach & missions

Reaching our neighbors—locally, regionally and internationally.



Events & outreach

Our all-campus events designed to reach the surrounding community.



Missions support

Ongoing support of organizations that are also working to reach, teach, equip and send in the name of Jesus.

LOCAL

40%

- Boise Bible College
- Boise Rescue Mission
- Launch Ministries
- Love INC
- Lifeline Pregnancy Center

REGIONAL

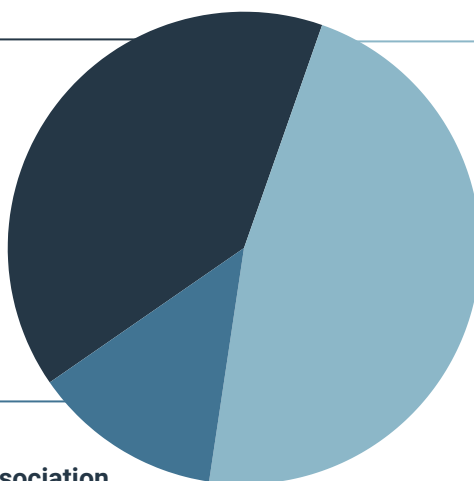
13%

- Intermountain Church Planters Association
- Evergreen Church Planting Network

INTERNATIONAL

47%

- Sowers International
- Family Hope International
- Wholehearted Home
- Christian Ministry Fellowship International
- Kerala Christ Church Mission
- Pioneer Bible Translators
- Paraclete



Benevolence

Meeting the immediate needs of our ECC family and community members.

151

Families supported with rent, utilities and medical expenses

321

Christmas and Thanksgiving meals provided



Gifts given to kids and families for Christmas

Mission expansion

Launching and expanding satellite campuses in the Treasure Valley as we work towards our goal of a campus within 20 minutes of every home.

January 2026 Prison Campus

In 2025 we laid the groundwork for our collaboration with God Behind Bars and the Idaho State Correctional Institution to launch our Prison Campus with Friday evening services starting January 9, 2026.

March 2026 West Valley Expansion

The new education wing at the West Valley campus will bring needed classroom space to support their growing kids, youth and adult discipleship programs. We broke ground on July 14th and are working towards a March completion date.

April 2026 Garden City Campus

ECC's newest satellite campus will meet at the Revolution Concert House in Garden City. We started praying over the space and hosting vision nights in September of 2025 and will hold pre-launch services starting in January with an April launch planned for Easter.

Thank you for your faithful generosity—as you can see, it makes a real difference in the life of our church and community. Every number you see has a story of change attached to it, a story that wouldn't be possible without you. If you're looking for a way to grow spiritually this year, consider making regular giving part of your rhythm. It's a practice that shapes our hearts as much as it supports our mission. We look forward with anticipation to what God will do through Eagle Christian Church in 2026.



STEVE CRANE Senior Minister