

INTRODUCING...



Our Vision is to generate awareness and funding to help meet the physical and spiritual needs in every community across the nation and beyond.



Our Mission is to use our God-inspired, Heaven-sent, one-of-a-kind Fundraising Program and Family-friendly TV Network to generate an abundance of sustainable funding to help provide life changing Hand-ups... not just compassionate Hand-outs.



Our Goal is to not only fund our mission... but to help fund the mission of others by conducting joint fundraisers with Churches, Organizations, Schools, plus Humanitarian-minded Business who will promote our Vision and Mission along with their own.



Our Objective is not just to generate and provide funding to help worthy Humanitarian causes, but to also reward every Donor with several **Valuable Benefits** that could improve their lives.



DONORS ARE ASKED TO MAKE AN ANNUAL DONATION OF: \$30 \$60 -or- \$100

AS A REWARD, EVERY DONOR RECEIVES THE FOLLOWING: *Thank You Benefits:*



An online Debt Analysis and Professional Financial Consultation that could save and/or make them thousands of dollars.



Access to some awesome educational courses in the categories of History, Religion, and Politics. Included is understanding the U.S. Constitution, the Bill of Rights, and more.

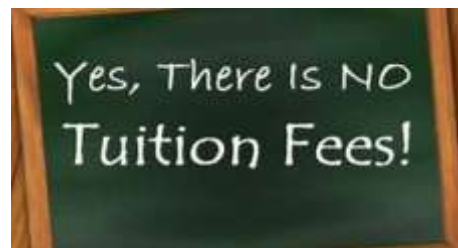


ALSO, as a Bonus all Donors receive Free access to our Family-friendly TV Network that will only broadcast good, clean, wholesome content in multiple categories for all ages.



BUT WAIT THERE'S MORE... AND THIS ADDITIONAL BONUS IS AWESOME !!!

- **Every Donor receives access a fully accredited Bible College where they can earn their Associate's, Bachelor's, Master's, and Doctorate's Degree online for FREE...**



PLUS:

- **\$100 DONORS ALSO RECEIVE FOUR \$25 OFF FINE DINING CERTIFICATES THAT ARE REDEEMABLE AT THOUSANDS OF LOCATIONS ACROSS THE NATION. (A \$100 VALUE)**

HOW THE PROGRAM WORKS:

All Participating Entities (and using Churches as the example) would...



receive a furnished customized Website that explains the fundraiser, how the funds will be used, plus how their congregations and online followers can participate and be generously rewarded.

The Entity (Church) receive 50% of the annual Donations made through their own Website to help support their mission; with the other 50% supporting worthy causes in their community, across the nation, and beyond.

Visit www.seyah.org/causes to view a few of the worthy causes that receives support.

To increase their funding, their Donors also receive a furnished website to access their Thank You Benefits with the option of promoting the Fundraiser to a few others to receive some additional benefits such as: Luxury Cruises, Hotel Stays, Vacation Packages, and much more.



The Entity (Church) also receives 50% of the donations made through their Donor's website which could double, triple, quadruple, or more the amount of funding the Entity (Church) could receive annually.



AND IF THAT'S NOT ENOUGH...

All Entities (Churches) and their Donors may become eligible to receive funding from our separate, one-of-a-kind, God Inspired Humanitarian Aid Membership Program to help meet their own needs, their family's needs, and the needs of others in their community once that Program launches.



That Program is designed to multiply the SEEDS sown so the HARVAST will be able to help more people accidentally than most other programs will on purpose.

That Pool of Funding is filled by advertisers, corporate grants, private endowments, wise investments, plus a portion of the funding SeYah receives from every fundraiser.



Funding for the Entity

Funding for Donors

Once the Program acquires enough funds to provide sustainable monthly funding, the Program will be announced along with the requirements for Entities and Donors to receive some funding.

The Program is designed to provide up to \$20K per month in Humanitarian Funding for Entities and up to \$3K per month for qualified Donors.

Can you imagine Churches receiving an additional \$20K or more per month to evangelize and address the humanitarian needs in their own community?

Can you also imagine a Church going door to door seeking those who may need physical and spiritual help?

Can you Imagine a Church operating a FOOD TRUCK with several volunteers going out to attract the attention of the needy by feeding them, and being able to minister to them one on one?

Can you also imagine every Church member receiving \$3K per month to help meet their needs, their family's needs, and the needs of others in their community?

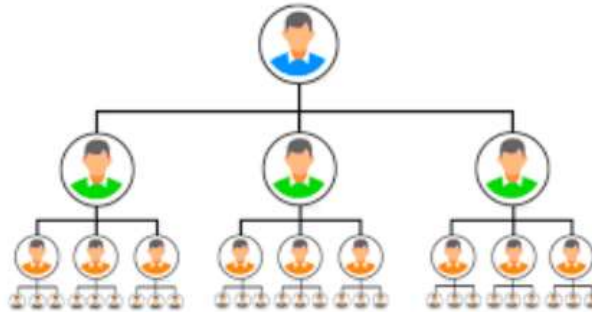
Plus, can you imagine Plumbers, Landscapers, Roofers, Painters, and other Businesses receiving monthly funding so they can provide their services for little to no cost for the elderly, the disabled, our veterans, and others in need?

ONLY GOD KNOWS WHAT CAN BE DONE THROUGH THESE TWO GOD-INSPIRED PROGRAMS.

HERE'S HOW THE HUMANITARIAN AID MEMBERSHIP PROGRAM IS FUNDED, MANAGED, AND THE FUNDING IS DISPURSED.

THE \$60 HUMANITARIAN AID PROGRAM is pre-funded with \$15 for each Entity / Donor.

- The Model and Management Software uses a proven 3 X 6 Structure as shown below:



- Every position in the Matrix requires \$60 to be fully funded.
- Every Entity and Donor is automatically placed into the Structure and is pre-funded with \$15 by SeYah, which leaves a balance of \$45.
- As the Matrix generates funding, the first \$45 produced is allocated to fully fund the Entity and/or Donor's position before it can provide any funding to a qualified Entity or Donor.
- Over time each position should be able to provide up to \$20,000 per month for Entities in additional Funding and up to \$3,000 per month for qualified Donors.

To ensure the Program isn't viewed as a Pyramid Scheme by the regulating authorities, the Program must offer a product or service for sale. Therefore, the Program will sell \$60 annual Memberships in this separate, one-of-a-kind Program to comply.



Only when this Program is capable of providing sustainable monthly funding will the Program launch and be made available for Entities and Donors to participate in it, plus the requirements to be able to receive funding.

However, should the Program NOT produce the results as expected... then the Program will never be revealed to avoid any backlash, disappointment, or legal ramifications.

PLUS: The management tool (**the Matrix**) will never be revealed to anyone to avoid the Program being associated with any kind of MLM, Networking, or Business Opportunity because... it's **NOT !!!** even though the Program **USES** the same model and management software as those other industries.



The Chart below shows the 3 X 6 Structure, where the first \$15 is allocated (levels 1-3) and how the \$45 balance will be withheld, plus allocated once it's generated. (levels 4-6)

Note: once a position has been fully funded with \$60, then that position can begin providing Funding for the Program.

The chart also shows the amount that's allocated to an Entity, and to a Donor.

1)	3	5	15	15	
2)	9	5	45	60	
3)	27	5	135	195	up to \$260 per mo. with 1 Sale
4)	81	10	810	1,005	up to \$1,060 per mo. with 2 Sales
5)	243	10	2,430	3,435	up to \$3,060 per mo. with 3 Sales
6)	729	25	18,225	21,660	up to \$20,060 per mo. for an Entity with 20 Donors per cause

NOTE: \$60 per month will be withheld to pay the monthly Membership Fee

In the future, the Program could even expand its benefits by offering its Members discounted rates on...

- URL's
- Life Insurance
- Auto Insurance
- Home Insurance
- **Plus other products and services...**