



2025

---

# ANNUAL IMPACT REPORT

**ABILITY TREE**

PO Box 14928, Springfield, MO 65814  
855.288.6735



# ability tree

GOING ALONGSIDE FAMILIES IMPACTED BY DISABILITY, BY PROVIDING R.E.S.T. (RECREATION, EDUCATION, SUPPORT, & TRAINING).

**COMMUNITY  
BRANCH**

making community possible

**CONSULTING  
BRANCH**

making Jesus accessible

NATIONAL OFFICE



# WHO WE ARE



## MISSION STATEMENT

Coming alongside families impacted by disability by providing R.E.S.T. — Recreation, Education, Support, and Training.

---

## COMMUNITY BRANCH

Making  
Community  
Possible.

## CONSULTING BRANCH

Making  
Jesus  
Accessible.

---

## VISION

To cultivate inclusive and supportive communities where individuals and families affected by disability can enjoy healthy relationships in their neighborhoods, schools, workplaces, and churches.

# A NOTE FROM OUR FOUNDERS

Dear friends and partners in ministry,

**2025 marked 15 years, a decade and a half of Ability Tree coming alongside families by providing REST and we couldn't have done it without YOU! Thank you for your partnership in the mission!**

**2025 has been a year of growth and opportunity for Ability Tree.**

**Highlights from 2025...**

- Ability Tree spotlight at the General Council of the Assemblies of God in Orlando, Florida in front of 20,000 ministers and delegates. The best part was when our Ability Camp worship team, including three adults with disability, sang I am a Child of God from the stage!
- Our Community Branches provided a variety of day and after school programming for individuals and families in Arkansas, Florida, and New Jersey.
- Our Consulting Branch trained and equipped churches in 28 states and multiple countries.
- We served 101 campers in PA, OK, and FL with the help of 127 volunteers. We saw God move in mighty ways and celebrated 10 people's decision to follow Jesus through water baptism.

**In 2026, to meet the growing need, we are...**

- Adding a third week of camp at our Ability Camp PA location.
- Launching our digital training hub – a dynamic, interactive platform where churches can access tailored training videos for staff and volunteer development, while still benefiting from Ability Tree's personalized guidance.
- Expanding outreach in local communities and local churches. We are excited to equip more churches and communities to become accessible, and also host local programming for disability-impacted families right here in Springfield, MO.

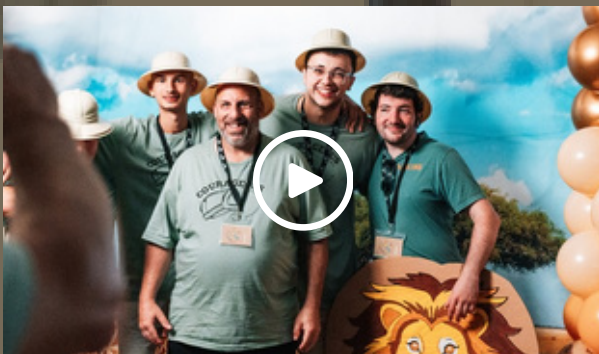
With YOUR continued partnership in the mission, we can make Jesus accessible and community possible to the 1.3 billion people impacted by disability worldwide!

Gratefully,

**Joe & Jen Butler**

*Founders*

# HIGHLIGHTS OF OUR YEAR



## Ability Camp Serves 79 Adults with Disability

Not only were we able to give 79 campers a faith-based summer experience, their families were able to receive a week of respite. Due to high demand, a growing waitlist, and a generous church partner, Ability Tree will be expanding to three weeks in 2026!



## Church Accessibility Takes a Front Row Seat

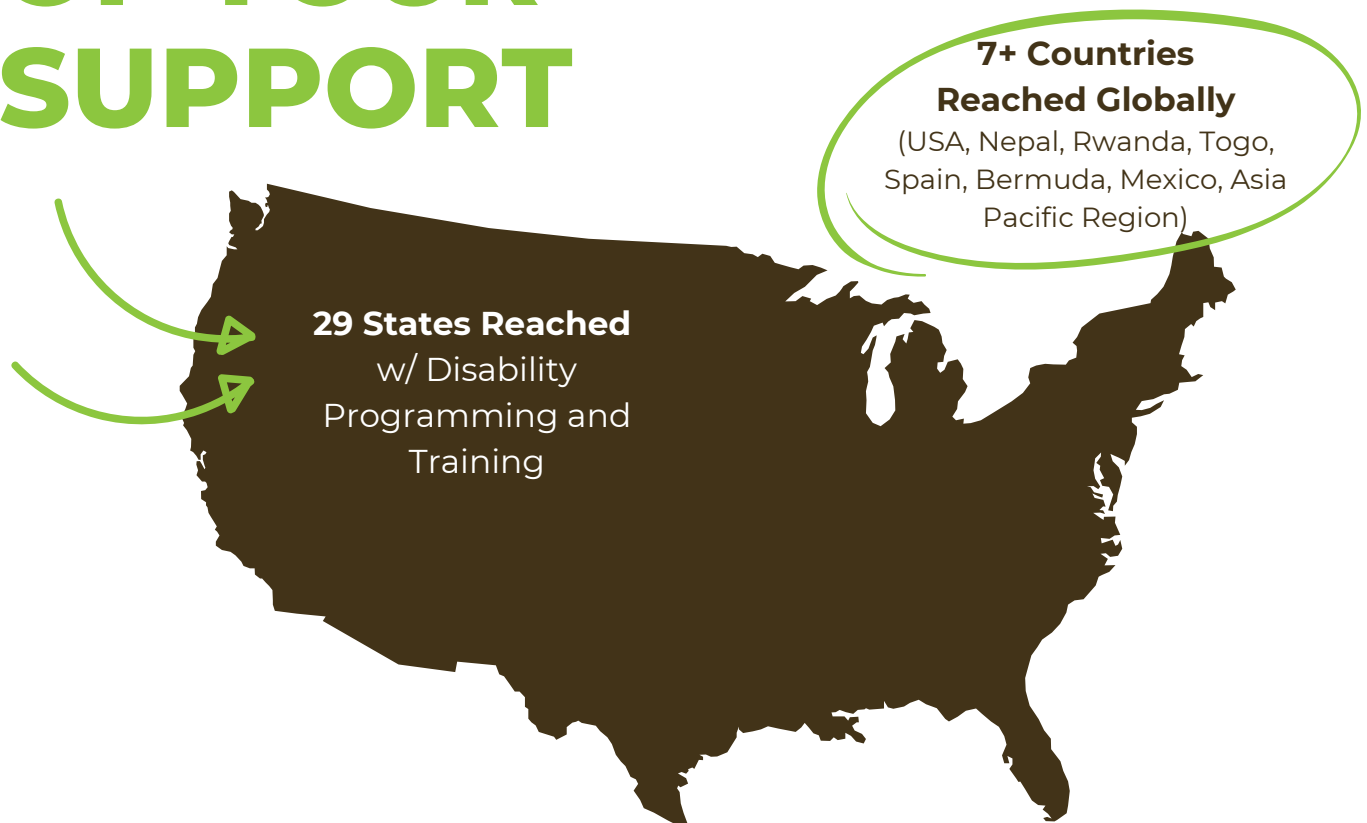
At the Assemblies of God '25 General Council, we represented how the collective Church can welcome and include individuals with disabilities, empowering them to engage and serve in all areas of church life—including worship ministry.



## Celebrating 15 Years of Ministry

June 2025 marked 15 years since the creation of Ability Tree! To celebrate we gathered story after story of how this ministry has impacted families, individuals, and churches across the nation.

# THE REACH OF YOUR SUPPORT



## 2025 Total Giving

**\$1,140,000**

## Where Funds Were Invested

Your support made both direct care of families and church-wide impact possible, through:

- 3 weeks of Ability Camp for adults with disability in Oklahoma and Pennsylvania
- 3 Community Branches, providing disability-inclusive programming in Arkansas, New Jersey, and Florida
- Training churches to both understand disability and how to best modify ministries to include individuals with disability

# MAKING COMMUNITY POSSIBLE...

Through disability programming, events, camp, and family support, our Community Branches are able to Make Community Possible in NJ, AR, and FL.

## Ability Camp

A week long sleep away summer camp for those with disabilities. Full of dance parties, morning and evening chapel, outdoor activities, singing, art, making friends, and deepening relationships.



**101**

Total Adult & Youth Campers



**16**

New Campers



**10**

Campers & Counselors Baptized



**145**

Volunteers, Counselors, & Staff



**11**

Church Missions Partners



**\$22,900**

Camper & Counselor Scholarships

## Community Branches

Ability Tree Community Branches provides local disability-inclusive programming in AR, NJ, and FL. Programming allows those with disability an opportunity to engage with others while their families receive a time of respite.



**469**

Events & Programs



**1,710**

Hours of Respite



**2,728**

Volunteer Hours



**44**

Families Scholarshipped



**\$38,110**

Total Scholarships



*"It's been 33 years—since our honeymoon!—since my wife and I had time alone together. Because of Ability Camp, not only did my wife and I have a great, peaceful time away, but the look on our son's face said it all. The staff was exceptional communicating with us and sending pictures and videos during his stay."*



# MAKING JESUS ACCESSIBLE...

Through disability training, pastoral support, resource guides, and more, our Consulting Branch was able to help churches across the world Make Jesus Accessible.

## Consulting Branch

The Ability Tree Consulting Branch equips churches to welcome and include families impacted by disability. It does so through church staff/volunteer training, facility assessments, and guided ministry modification.



**49**

Church Requests Submitted



**69.4%**

Of Requests, Resulted in a Consultation



**26**

New Church Partners



**53**

Total Church Trainings



**1,300**

Volunteers, Staff, & Pastors Trained



**136**

Sensory Bags Distributed



**25**

States Reached w/ Accessibility Training/Resources



**76**

Churches & Individuals Became Giving Partners



**19**

Churches Started a Buddy Support Program



*I'm so grateful for the impact Ability Tree has had on my family. My son Hudson, who has multiple disabilities, was nervous moving up to a new classroom at church, but the sensory bags helped him manage his anxiety and sensory needs. Simple things like fidgets and headphones gave him the confidence to join in and be fully included.*





# WE'D LIKE TO THANK ALL OUR DONORS FOR THEIR GENEROUS SUPPORT

## ACKNOWLEDGEMENTS

We would not be able to carry out God's calling to come alongside families impacted by disability without the generous support of our donors, our team, and our volunteers. Thank you for all that you do to come alongside US in this imperative mission.

## ABILITY TREE

PO Box 14928, Springfield, MO 65814  
855.288.6735

