

HARTSEL FIELD TRIP - June 11th, 2022



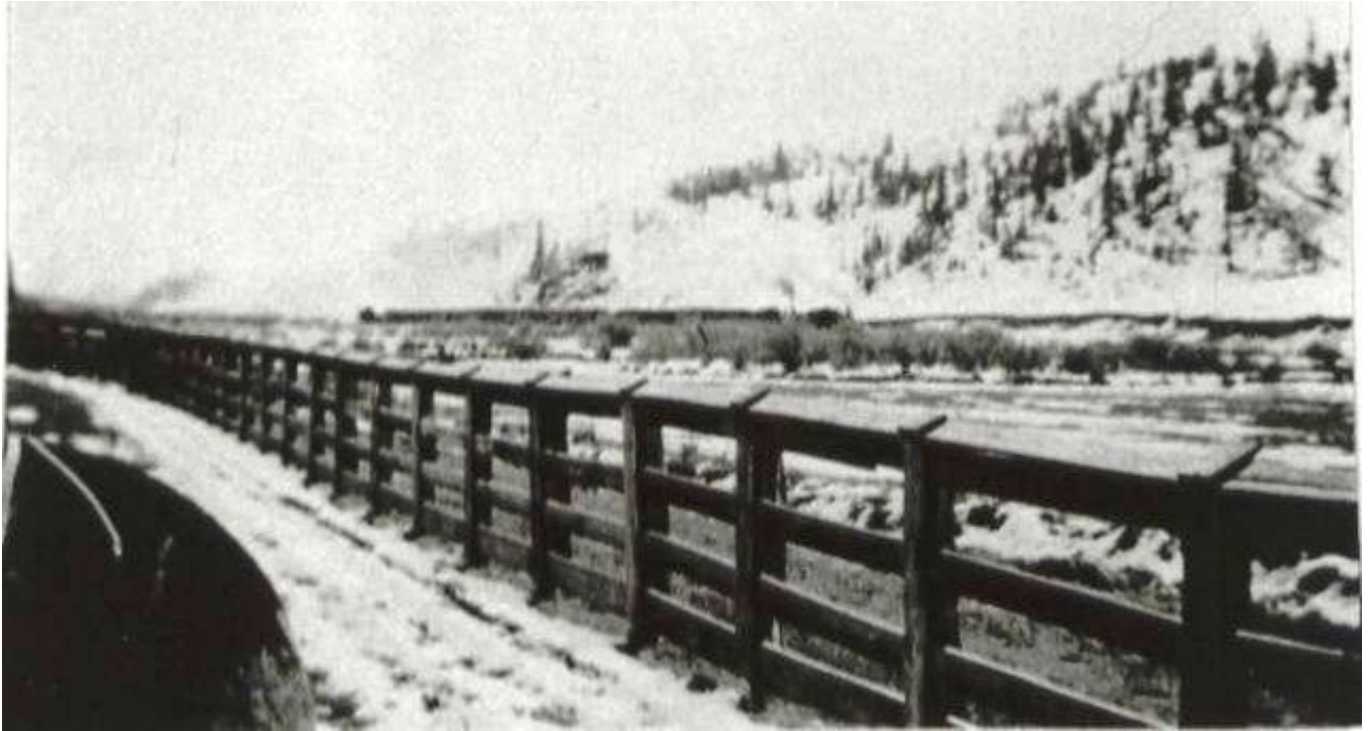
Hartsel Depot 1916

Pic 670 Source: Karen Denison



***Sam Hartsel used this water wheel to pump mineral water
from the hot springs to his ranch house 2 miles away.***

Pic 2136 Source: South Park Historical Foundation



Early 1900's. Midland train going west out of Hartsel.

Pic 639 Source: Karen Denison



***Circa 1930s. l to r: old section house (not depot), Gene Kleinknecht's garage
2 men sitting are Ed Mills and Harry Locke.***

Pic 1694 Source: Mills Family from Marguerite (Mills) Payne nverva Price Graham



1953. Post Office.

Pic 1580 Kenny Englert photo. Source: Special Collections, Tutt Library, Colorado College

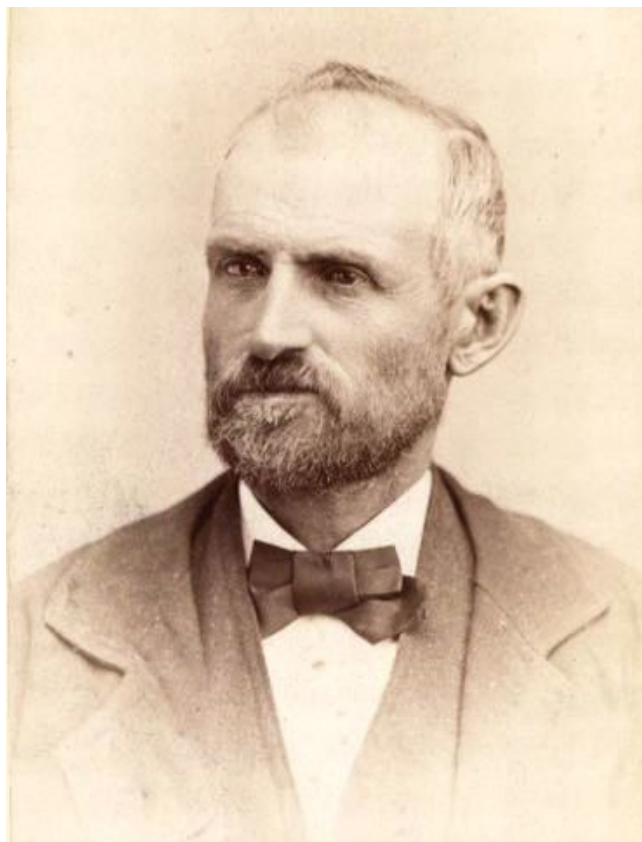


Hartsel Ranch Circa 1934

Pic 1605 Source: Mills Family from marguerite Mills Payne



Hartsel Ranch circa 1920's
Hollis Mills is shown with the sheep
pic 1941 Source: Mills Family from Maruerite (Mills) Payne



Samuel Hartsel - late 1880's
pic 1334 Source: Samuel Hartsel Collection