



## ***Shawnee Depot***

*Pic 519 Source: Howard & Freda Mason*



***Winter scene with train and Shawnee Lodge in background.***

*516. Shawnee. Source: Howard & Freda Mason*



***Shawnee 1936 - Front of Price Store & Post Office***

*Pic 2890 Source: Minerva Price Graham*



***Circa 1920's Interior of Price Store***

*Pic 2899 Source: Minerva Price Graham*

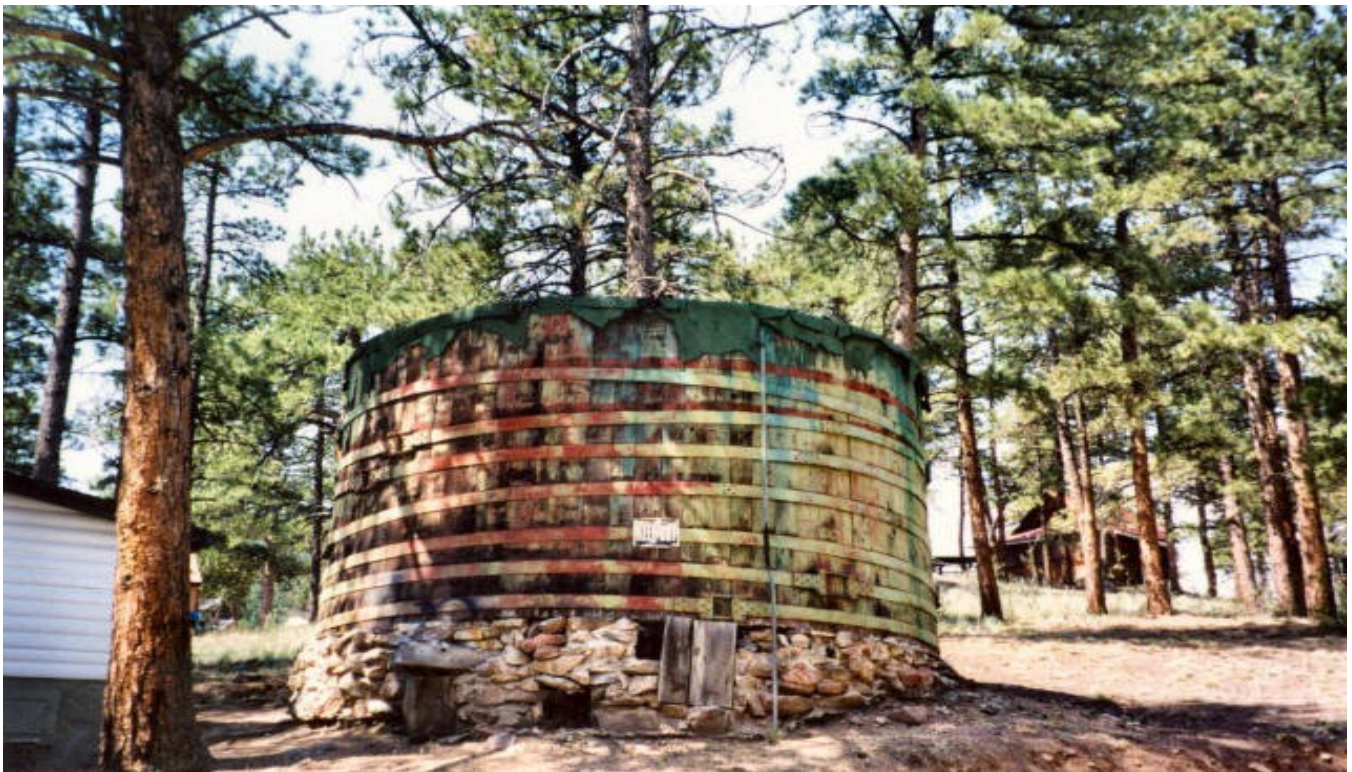


Greeting from  
SHAWNEE, COLO. ☉



***Early 1900's Grand View Hotel***

*Pic 1590 Source: South Park Historical Foundation*



***Water Tank on Bob Wonder's property***

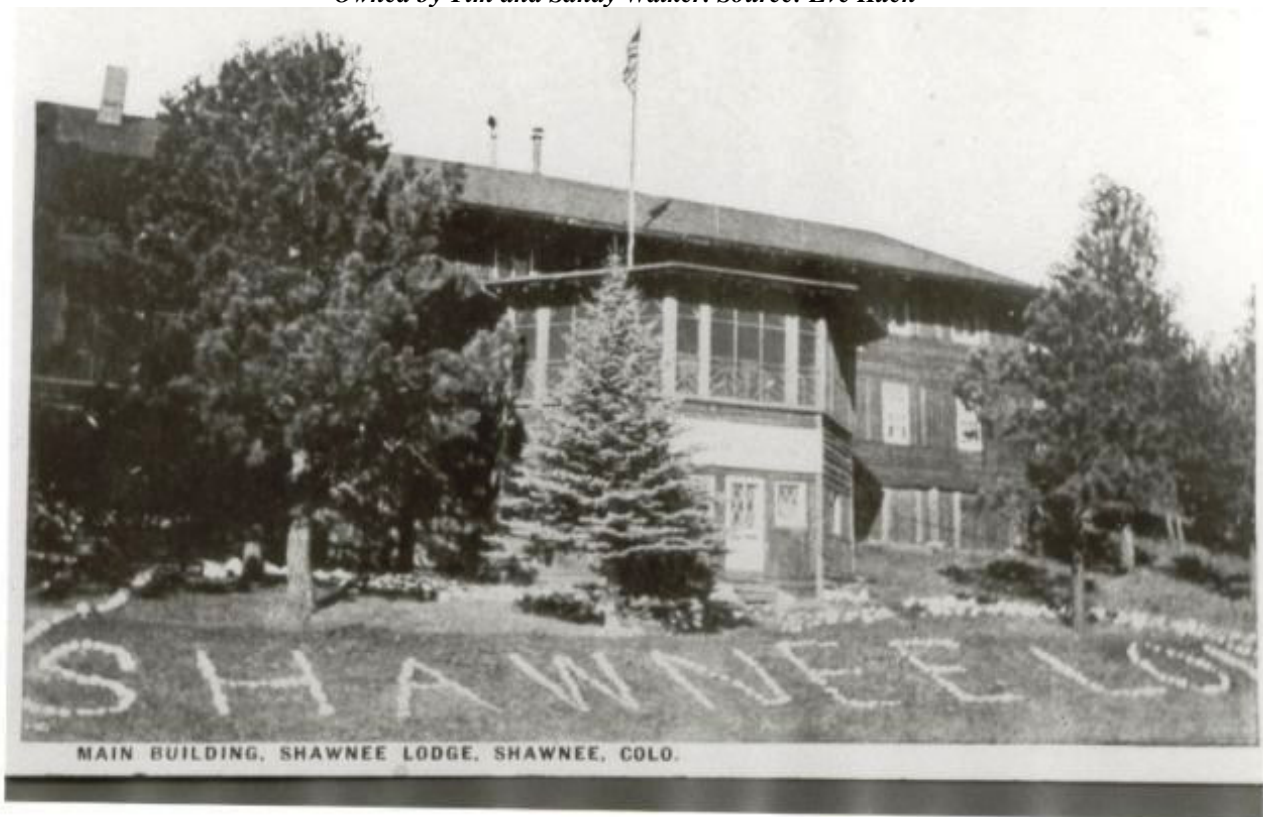
***Torn Down in 2002***

*Source: Eve Kuenn*





***Bowling alley***  
***Built in about 1904 by Knight family. Building is on posts.***  
*Owned by Tim and Sandy Walker. Source: Eve Kuen*



## ***Shawnee Lodge***

***Bob Richmond's great grandfather, John Hamilton McFarland, first came to Estabrook as a station agent in mid 1880s. He then moved to Grant where he died in 1907 where he was also the station agent. May McFarland owned both the Geneva Lodge at Grant and Shawnee Lodge. She sold both lodges.***

*pic 453 Source: Bob & JoAnn Richmond*